



# Welcome

## **Project Parkway**

**Goal 1- Increase Academic  
Achievement and  
Engagement for All  
Students**

**Focus C - Data**



# Focus Area C Leaders

- Mrs. Bonnie McCracken
  - River Bend Elementary School Principal
- Mrs. Linda Lelonek
  - West Middle School Principal
- Mr. Ron Banfield
  - South High School Assistant Principal
- Mrs. Diane Richter
  - Special School District Area Coordinator
- Dr. Chialin Hsieh
  - Student Assessment Coordinator

## Focus Area C:

**Collect, analyze, and use data from national, state, and Parkway assessments to monitor curriculum, inform instruction, and implement academic interventions to increase student achievement.**



What

- What does school district data look like?

Where

- Where do we obtain data?

When

- When do we use data?

Why

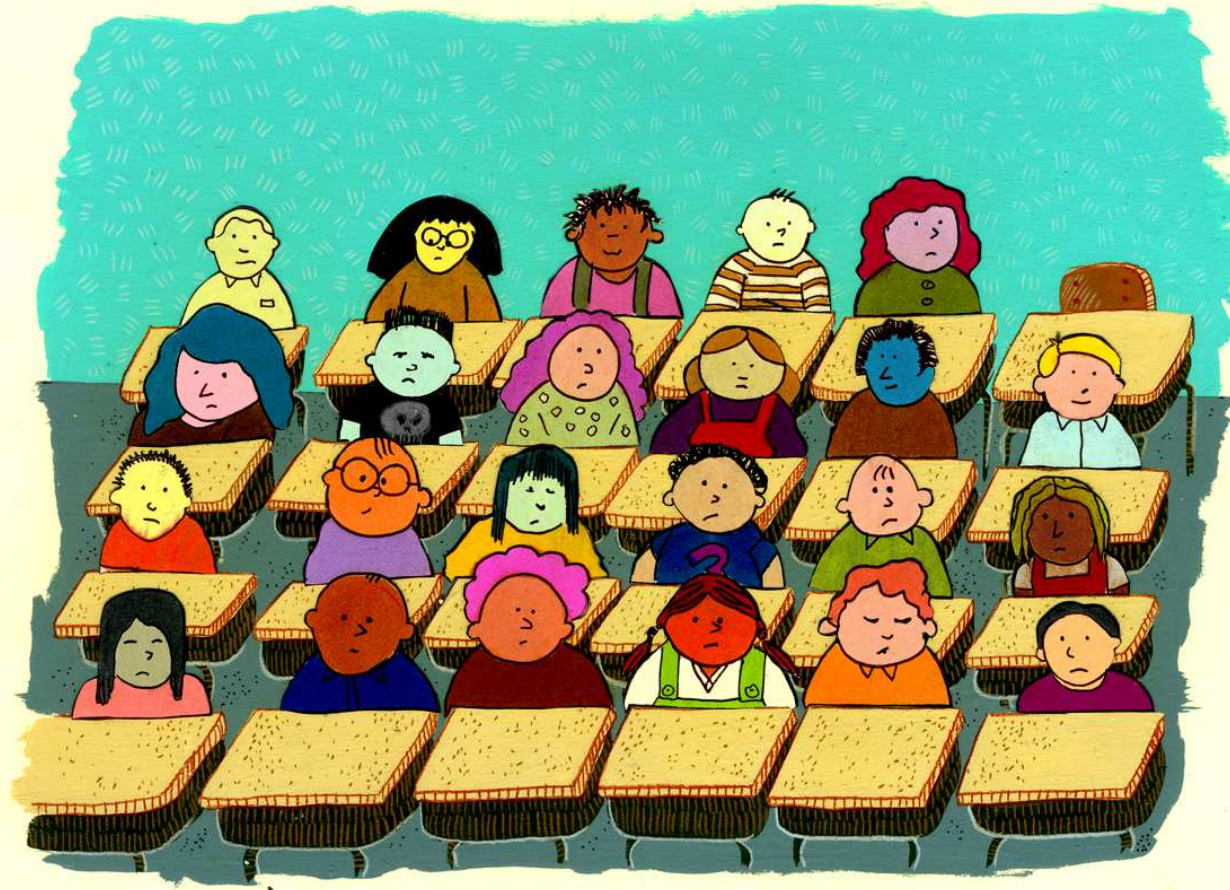
- Why do we use data?





# What Does Data Look Like?

- District data
  - School data
    - Grade level data/Course data
      - Classroom data
        - Individual student data



## Focus Area C:

Collect, analyze, and use data from national, state, and Parkway assessments to monitor curriculum, inform instruction, and implement academic interventions to increase student achievement.

What

- What does school district data look like?



Where

- Where do we obtain data?

When

- When do we use data?

Why

- Why do we use data?



# National Assessment

- **ACT**
- **SAT**
- **PLAN** pre-ACT for 11<sup>th</sup> grade (High School)
- **EXPLORE** pre-ACT for 8<sup>th</sup> grade (Middle School)
- **Stanford Achievement Assessment** 3<sup>rd</sup>  
grade through 7<sup>th</sup> grade



# State Assessment

- **MAP: Missouri Assessment Program**
  - 3<sup>rd</sup> grade through 8<sup>th</sup> grade
  - Communication Arts, Math, and
  - Science (5<sup>th</sup> & 8<sup>th</sup> grades only)
  
- **EOC: End of Course Exam**
  - Middle and High Schools
  - Algebra I, Geometry, Algebra II
  - English I, English II
  - Biology II
  - American History, Government



# Parkway Assessment

- District Common Assessment
  - All subject areas
  - All grade levels
  
- School Common Assessment
  
- Classroom Assessment



# Student Demographic Information

- Race
- Gender
- Individual Educational Plan (IEP)
- Limited English Proficiency (LEP)
- Free/Reduced Lunch (FRL)
- Other information

## Focus Area C:

**Collect, analyze, and use data from national, state, and Parkway assessments to monitor curriculum, inform instruction, and implement academic interventions to increase student achievement.**

What

- What does school district data look like?

Where

- Where do we obtain data?



When

- When do we use data?

Why

- Why do we use data?



# When Do we use data?

- On-going monitoring of student progress
- Informing instruction and curriculum
- Implementing academic interventions



# Movie

Southwest Middle has been systematically examining data in an effort to improve Missouri Assessment Program scores.

## Focus Area C:

**Collect, analyze, and use data from national, state, and Parkway assessments to monitor curriculum, inform instruction, and implement academic interventions to increase student achievement.**

What

- What does school district data look like?

Where

- Where do we obtain data?

When

- When do we use data?



Why

- Why do we use data?





# **The Mission of the Parkway School District**

**To reach and teach each student**

**All students**

**Every day...together**

- **This mission is supported by a strong and consistent commitment that all students meet high academic standards in preparation for responsible participation as citizens in a democratic society.**

## Focus Area C:

**Collect, analyze, and use data from national, state, and Parkway assessments to monitor curriculum, inform instruction, and implement academic interventions to increase student achievement.**

What

- What does school district data look like?

Where

- Where do we obtain data?

When

- When do we use data?

Why

- Why do we use data?





# **Role of the Members in Focus Area C**

- 1. Review data**
- 2. Determine gaps**
- 3. Study possible causes**
- 4. Establish priorities**
- 5. Set 5-year achievement goals**
- 6. Construct measurable learning objectives**
- 7. Monitor and evaluate the progress toward the goals**



# The Mission of the Parkway School District

**To reach and teach each student,  
all students,  
every day...together**