

Warm Up $y = a|x-h| + k$

1. Graph the following.

$y = |x-2| + 3$

$a = 1$ $h = 2$ $k = 3$
 $V(2, 3)$

$D: (-\infty, \infty)$

$R: (3, \infty)$

2. Given: $y = -2|x+4| - 3$

Explain the specific transformation between the given eq

a -2 Reflect/more narrow

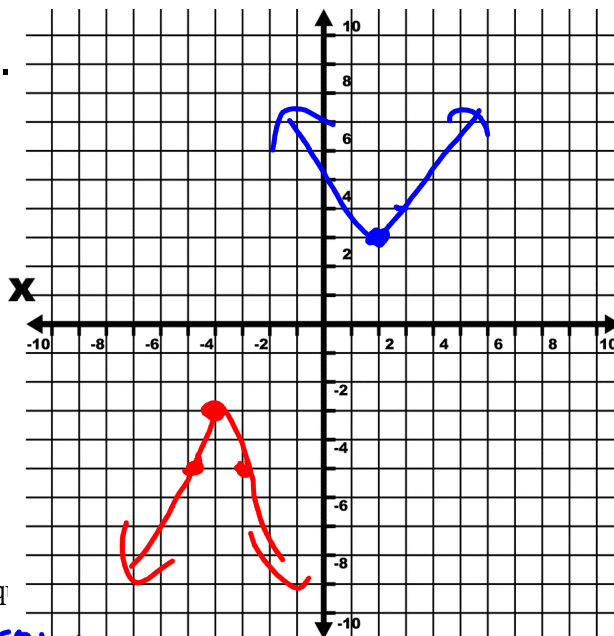
h -4 left 4

k -3 Down 3

The vertex of the given equation is (-4, -3)

Domain: $(-\infty, \infty)$

Range: $(-\infty, -3)$



$y = -2|x+4| - 3$

Homework Questions

AV Grids

Absolute Value DLT

$$8. |-4|^2 + |-7| - 2 =$$

F. 21

G. 13

H. 7

J. 25

K. 17

Learning Targets

Algebra 2 Trig

Chapter 2 - Unit Plan 2017-18
1st degree Polynomials Linear Equations and Functions

DAY	Book Section	Learning Targets	Homework due next class
1	-FOUNDATIONS of Algebra 1 WS -Growth Measure for Alg2Trig -Get to Know Ya	Polynomials, Functions, Function Notation, Polynomials, Independent, Dependent, Input, Output DOMAIN, RANGE Summer Homework DUE! 22pts	-Finish Foundations WS -Pg. 341, #3 – 8 Pg. 76, #5 – 23 odd, 35, 38, 39, 45, 46 -Last Chance Summer HW 20pts
2	2.2, 2.3, 2.4 Prerequisite skills from ALG1	-Graphing & Writing Equations of Lines, Slope	-Finish Writing Equations WS -Pg 86, #24, 44, 45, Pg 94 #60, 68 -Pg. 93 #24, 27, 28, 43 – 46, pg 101 #10, 11, 18, 19, 22, 23, 42, 44
3	2.2, 2.3, 2.4, 2.6 Correlation WS Summer Homework Questions	-Correlation & Best Fitting Lines	-Finish Correlation WS -Pg 117, #3 – 6, 13, 17 – 21, 27
4	2.7 Extension	-SUMMER HOMEWORK QUIZ (No calculator)!!! -Piecewise Functions	-Pg 131, #1 – 7, 8b -Finish Piecewise WS
5		-Piecewise Functions In class Piecewise WS	

6	2.7 & 1.7	-Absolute Value Functions Transformations Packet -Solving Absolute Value Inequalities	-Pg 127 #3 – 6, 11,13, 15 – 17 -Finish Absolute Value WS Pg 56, # 51-59 NO GRAPHS
7		-Review Day	Review WS Due Test Day
8	Test Day		Prereq Sheet for Unit 2 – Quadratic Functions

STUDENT SELF EVALUATION:

This is not for a grade, so be honest! Use the scale below to mark your honest evaluation of your understanding and use this to prepare for assessments.

Target Rating Scale: Choose which best fit your understanding
3 – understand and did work correctly
2 – made some mistakes, but understand now
1 – attempted, but don't know why you didn't get it right

Chapter 2 Polynomials, Linear Equations, and Functions				
Learning Target	Section in Book	Do I understand this target?		
		HW	DLT	Unit Review
1 I know the properties of a 1st degree polynomial.	5.2			
2 I know what a function is	2.1			
3 I know the properties and behavior of a function	2.1, 2.2			
4 I understand slope and rate of change	2.2			
5 I can write equations of lines given various data	2.3, 2.4			
6 I understand correlation	2.6			
7 I understand how to find a best fitting model for a data set	2.6			
8 I understand confidence coefficients and what they mean	2.6			

*Dry Erase Board and One Marker

-Each person on writes one topic and passes the board.

-You have 2 minutes!

STUDY GUIDE

Polynomials (5.2)

Functions (2.1)

Slope (2.2)

Writing Equations of Lines (2.4)

Graphing Equations of Lines (2.3)

Correlation/Best fitting Lines (2.6)

Piecewise Functions (2.7E)

Absolute Value Functions (2.7)

Solving Absolute Value Inequalities

Domain, Range (2.1/2.7) Intercepts (2.3)

2 parts to every test

CALC

NO CALC

What two questions do you have?

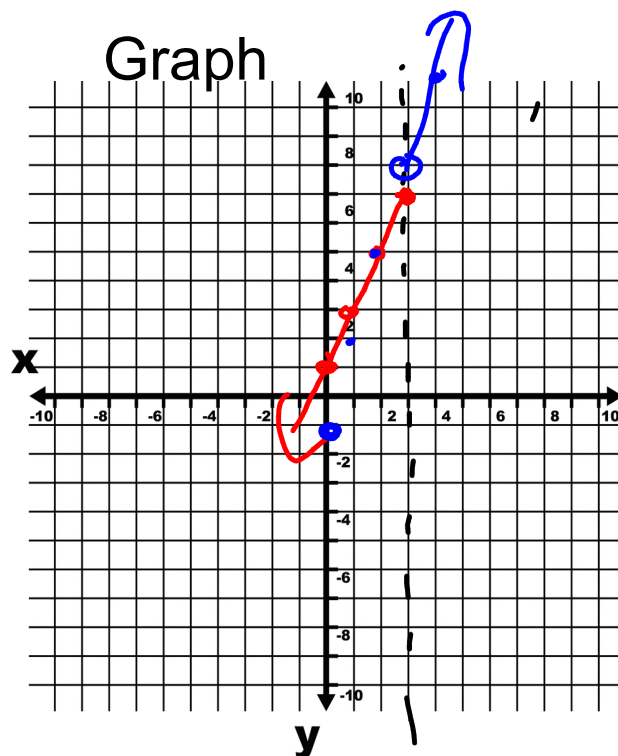
-ask your pod

EX:

$$f(x) = \begin{cases} \underline{2x+1} & \text{if } x \leq 3 \\ \underline{3x-1} & \text{if } x > 3 \end{cases} \quad \text{find:}$$

$$f(4) = 3(4) - 1 = 11$$

$$\begin{aligned} f(-2) &= 2(-2) + 1 \\ &= -3 \end{aligned}$$



Solving Inequalities Grid

$$\left| \frac{2}{3}x + 1 \right| > 5$$

$$\frac{2}{3}x + 1 > 5$$

-1 -1

~~$$\frac{2}{3}x > 4$$~~

$$x > 6$$

$$\frac{2}{3}x + 1 < -5$$

-1 -1

~~$$\frac{2}{3}x < -6$$~~

$$x < -9$$

$$\left| 3x + 5 \right| \geq 11$$

$$3x + 5 \geq 11$$

-5 -5

~~$$\frac{3}{3}x \geq 6$$~~

$$x \geq 2$$

$$3x + 5 \leq -11$$

-5 -5

~~$$\frac{3}{3}x \leq -16$$~~

$$x \leq -\frac{16}{3}$$

Word Problem Worksheet

*Due next class

Stations

AV & Review

<https://create.kahoot.it/details/duplicate-of-absolute-value-graphs/02a82fa1-d43f-4a5f-ac6d-287058df5637>

Function or Not

<https://create.kahoot.it/#quiz/fd7b5f98-5439-48a4-80c4-f811dd48cdc5>

<https://create.kahoot.it/#quiz/1507e13a-89bb-48ae-8f0a-86b4b6040bbf>

Order of Operations

<https://create.kahoot.it/#quiz/85d2933d-c609-4afb-b675-3d58c259e2aa>

X & Y Intercepts

<https://create.kahoot.it/#quiz/1346a77c-a11a-4bf1-9285-573f35f672d1>

Absolute Value Inequalities

<https://create.kahoot.it/#quiz/64cf3466-4a09-4df4-92b0-c3a49acf6858>

HW: Review Assignment