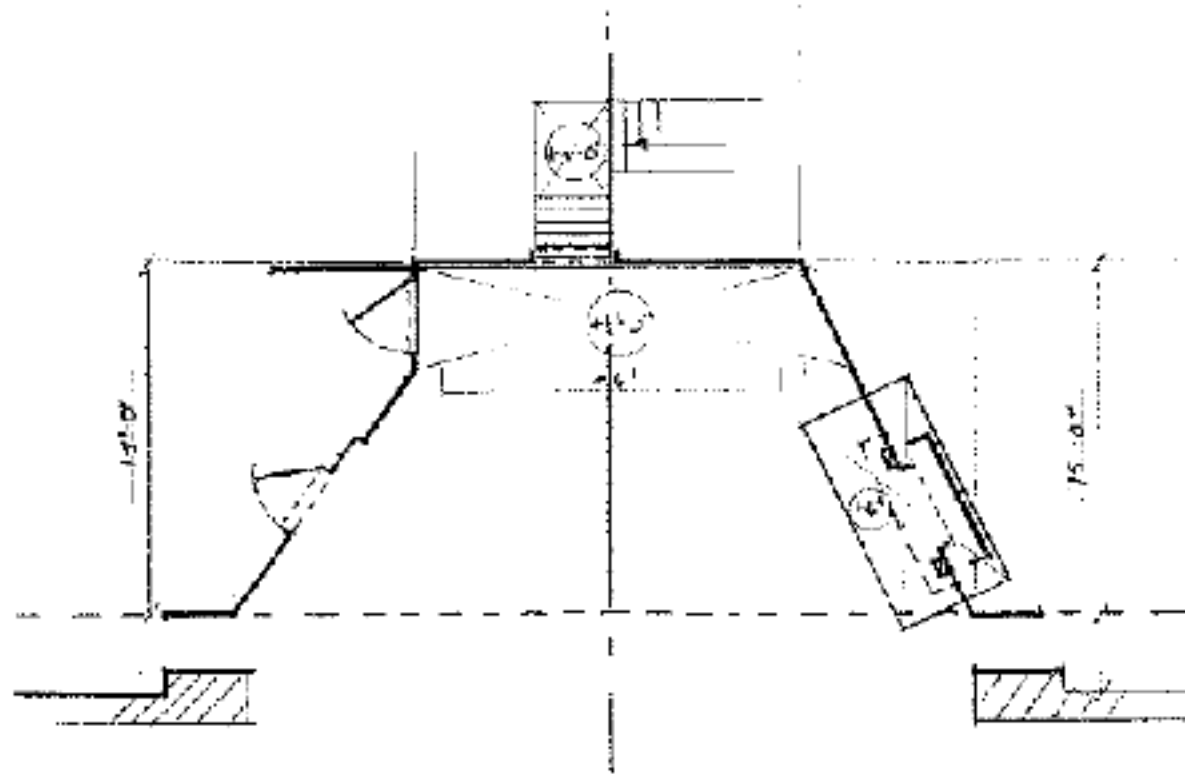


Ground Plan / Floor Plan

The Ground Plan is usually thought of as a bird's eye view of the stage. It aids the designer in developing the scenic design. It is also used by the director for establishing the flow of the action. For the lighting designer it is a mandatory instrument for planning the lights. And for the stage technician it is invaluable in determining the placement of the scenery.



Common symbols used in Groundplans:

