



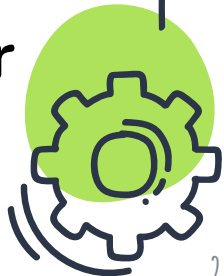
7TH GRADE

REGISTRATION

FOR THE 2025-2026 SCHOOL YEAR

## 8TH GRADE REGISTRATION: ACADEMY PREFERENCES

- **Students and their family must indicate preferences for the four PCMS Academies during this January registration process.**
- **Please make an informed decision! More info is available on the PCMS Counseling Website or you may contact your counselor or principal.**



# PCMS ACADEMIES REVIEW



PC-Legacy



PC-Flex



PC-Empower



PC-Design

In addition to selecting electives, you must indicate your academy preferences on the registration form.

You should discuss your preferences with an adult at home **PRIOR** to submitting your registration Google Form.





PC-Legacy



PC-Flex



PC-Empower



PC-Design

**Focus/  
Theme**

Research Based  
Middle School Model  
  
Based on grade level  
teaming structure

Blended Learning  
  
Flexible Pace, Place,  
Path  
  
Mastery

Student Centered  
Instruction  
  
Ownership of  
Learning  
  
Learner Profile

Personalized  
Learning Model  
  
Creativity and  
Inquiry Driven  
  
Voice & Choice

**Schedule**

Structured

Flexible

Structured

Flexible

**Curriculum**

Parkway Curriculum  
Standards Based

Parkway Curriculum  
Priority Standards

Parkway Curriculum  
Competencies &  
Standards

Parkway Curriculum  
Competency Based

**Instruction**

Higher Teacher  
Direction  
  
Blend of Strategies

Flexible Pathways  
  
Personalized Direction  
  
Blended Learning  
Model strategies

Initially Teacher  
Directed  
  
Increasingly more  
choice

Co Creation  
  
Project/Problem/  
Inquiry based

# PCMS ACADEMIES REVIEW



PC-Legacy



PC-Flex



PC-Empower



PC-Design

Requesting an Academy change?

**HIGHLY ENCOURAGED**

- X** Schedule a time to meet with your counselor or principal to discuss the change and impacts on your current Academy placement.



## Academy Preference (Current Student)

What is your current Academy? \*

- Design
- Empower
- Flex
- Legacy

Do you wish to remain in the same Academy for next school year? \*

- Yes
- No

Rank the Academy options offered in order of preference for your child.  
(Requests to change Academies from are dependent on available space)

Please choose the order of preferences of Academy for your child. \*

	PC - Design	PC - Empower	PC - Flex	PC - Legacy
1st Choice	<input type="radio"/>	<input type="radio"/>	<input type="radio"/>	<input type="radio"/>
2nd Choice	<input type="radio"/>	<input type="radio"/>	<input type="radio"/>	<input type="radio"/>
3rd Choice	<input type="radio"/>	<input type="radio"/>	<input type="radio"/>	<input type="radio"/>
4th Choice	<input type="radio"/>	<input type="radio"/>	<input type="radio"/>	<input type="radio"/>

## 8TH GRADE COURSE OFFERINGS: 2 ELECTIVE CLASS PERIODS

- Students in all four Academies select classes to fill two elective periods in their schedule.
- Courses range in length from a full year to semester options.







THE FOLLOWING COURSES ARE  
YEAR LONG COURSE  
OFFERINGS.

*MANY OF THESE OPTIONS HAVE A PREREQUISITE REQUIREMENT!*

1  
year  
course

# PERFORMANCE MUSIC

Concert Band 7

Concert Choir 7

Concert Orchestra 7

In order to enroll in a performance music course you must have the following:

1. Consent from the instructor
2. Successful completion of Band 6, Orchestra 6, Choir 6 OR Audition

# PERFORMANCE MUSIC

## Beginning Music Course:

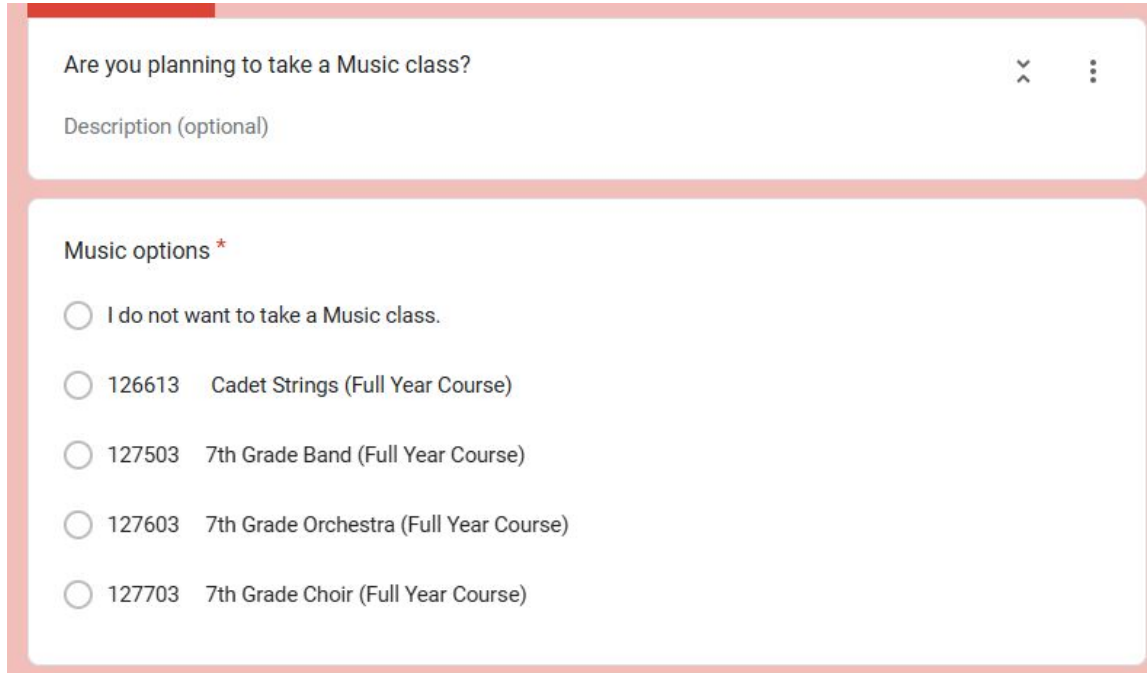
### Cadet Strings

*This is a beginning level strings course.*

*Does not require instructor approval.*

1  
year  
course

# HOW THE GOOGLE FORM WILL LOOK:



Are you planning to take a Music class? >> ⋮

Description (optional)

Music options \*

- I do not want to take a Music class.
- 126613 Cadet Strings (Full Year Course)
- 127503 7th Grade Band (Full Year Course)
- 127603 7th Grade Orchestra (Full Year Course)
- 127703 7th Grade Choir (Full Year Course)



# YEAR LONG COURSE = 1 ELECTIVE PERIOD

- “A” Level World Languages
  - Spanish
  - French
- Performance Music
  - Band
  - Choir (Mixed)
  - Orchestra
  - Cadet Strings

You can take 2 Year Long courses or combine a Year Long course with 2 semester courses to complete your schedule!

1  
year  
course

# MODERN & CLASSICAL LANGUAGES

**French A**

**Spanish A**

*Students who complete a 7th grade World Language "A" course meet the necessary requirement to take an 8th grade World Language "B" class!*

# HOW THE GOOGLE FORM WILL LOOK:

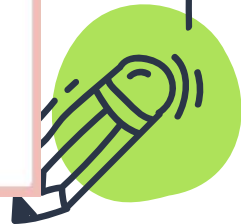
World Language options \*

- I do not want to take a World Language class.
- 067533 French A (Full Year course)
- 067833 Spanish (Full Year course)

Are you finished choosing your electives? If you chose a Music class AND a World Language class, click YES. \*

- Yes
- No

Determines Next  
Questions





COURSE DESCRIPTIONS:  
THE FOLLOWING COURSES ARE  
SEMESTER CLASSES



# 2 SEMESTERS = 1 YEAR / 1 ELECTIVE PERIOD

## OPTIONS:

- Music and Media
- Creating Theatre Artist: Onstage & Off
- Visual Arts Exploration
- Engineering Innovators
- Family and Consumer Sciences Skills (FACS)
- Business and Technology Creators

You can combine semester courses to create the year long course you want! Take 2 or 4 to fill your schedule!

# MUSIC AND MEDIA



WHAT?

WOW!

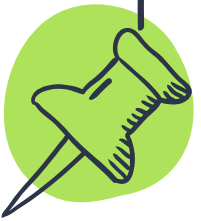
WHO?

## Students will learn:

- Fundamentals of musical elements
- Industry-standard language of music
- How to connect with modern musical applications

Students in this class will collaborate to write songs, play instruments, sing, and create your own digital music in a real world music lab!

Students who like music and enjoy being creative.



# CREATING THEATER ARTIST: ONSTAGE & OFF



WHAT?

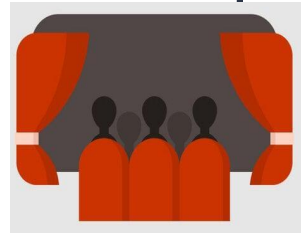
Students will learn the fundamentals of acting and develop skills in technical aspects of theater

WOW!

Get out of the audience and learn the basics of acting, scripting, and designing.

WHO?

Students who love theatre and want to deepen their understanding of all roles that contribute to a production.



# VISUAL ARTS EXPLORATION



WHAT?

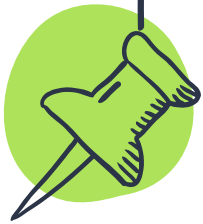
This class uses a variety of mediums to develop and enhance students artistic skills and creativity.

WOW!

Explore art through hands on learning with a variety of 2D and 3D projects

WHO?

Students that love self-expression, creativity, and the artistic process.



# FAMILY & CONSUMER SCIENCE EXPLORATION (FACS)



WHAT?

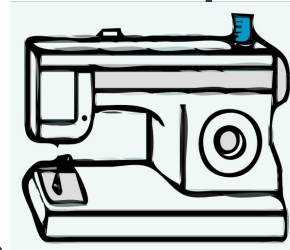
In this course, students will learn about human relations, food safety and sanitation, culinary arts, and apparel & textile design.

Wow!

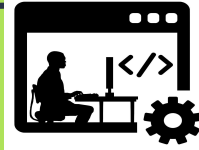
Have you ever wondered how pizza dough rises? Or how clothes are designed and made? You'll have the opportunity to learn these things with hands on activities and project based experiences!

WHO?

Students that love to cook, sew, or design their own apparel will LOVE this class!



# ENGINEERING INNOVATORS



WHAT?

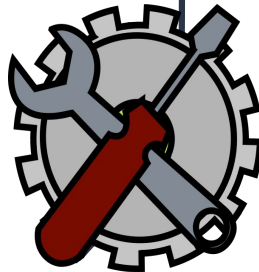
In this course, students will utilize concepts of STEM to design, model, create and modify various solutions to engineering problems.

WOW!

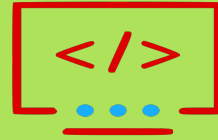
Students will learn to use prototyping tools including 3D modeling software and traditional woodworking machinery.

WHO?

Students that love to use their hands and solve problems will love this class. This class will help you think like an engineer!



# BUSINESS & TECH CREATORS



WHAT?

Students will learn to utilize microsoft products in a real business simulation that aligns with current industry practices.

WOW!

Learn how to navigate personal finance and spend time learning logic and problem solving skills through intermediate level coding and business simulations

WHO?

Students who are self starters, and have interest in learning a basic level of coding.



# HOW THE GOOGLE FORM WILL LOOK:

Fine Arts and Practical Arts options (Choice 1) \*

- 027543 Art Exploration
- 037543 Business & Tech Creators
- 057543 Creating Theatre Artists: Onstage & Off
- 097543 Family & Consumer Sciences Skills
- 107543 Engineering Innovators
- 127543 Music and Media





# HOW THE GOOGLE FORM WILL LOOK:

Fine Arts and Practical Arts options (Choice 2) \*

- 027543 Art Exploration
- 037543 Business & Tech Creators
- 057543 Creating Theatre Artists: Onstage & Off
- 097543 Family & Consumer Sciences Skills
- 107543 Engineering Innovators
- 127543 Music and Media

Are you finished choosing your electives? If you chose one Full Year class (a Music class or a World Language class) AND two of these classes, click YES. \*

Determines  
Next Questions



# HOW THE GOOGLE FORM WILL LOOK:

Fine Arts and Practical Arts options (Choice 3) <sup>...</sup> \*

- 027543 Visual Art Exploration
- 037543 Business & Tech Creators
- 057543 Creating Theatre Artists: Onstage & Off
- 097543 Family & Consumer Sciences Skills
- 107543 Engineering Innovators
- 127543 Music and Media

Fine Arts and Practical Arts options (Choice 4) \*

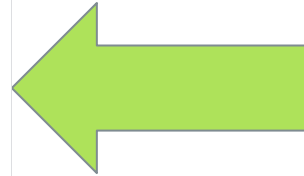
- 027543 Visual Art Exploration
- 037543 Business & Tech Creators
- 057543 Creating Theatre Artists: Onstage & Off
- 097543 Family & Consumer Sciences Skills
- 107543 Engineering Innovators
- 127543 Music and Media



# HOW THE GOOGLE FORM WILL LOOK:

Alternate Option (1st Choice)\*

1. 127503 7th Grade Band
2. 127603 7th Grade Orchestra
3. 127703 7th Grade Choir
4. 126613 Cadet Strings
5. 067533 French A
6. 067833 Spanish A
7. 027543 Visual Arts Exploration
8. 037543 Business & Tech Creators
9. 057543 Creating Theatre Artists: Onstage & Off



It is important  
to list  
alternate  
electives that  
are  
**DIFFERENT**  
from your  
first choice  
electives.



# LOCATE YOUR REGISTRATION MATERIALS

Registration form available on the [PCMS Website!](#)



SELECT THE  
GRADE YOU'RE  
GOING INTO  
(7th)

NOT YOUR  
CURRENT GRADE

# TIPS FOR SELECTING CLASSES

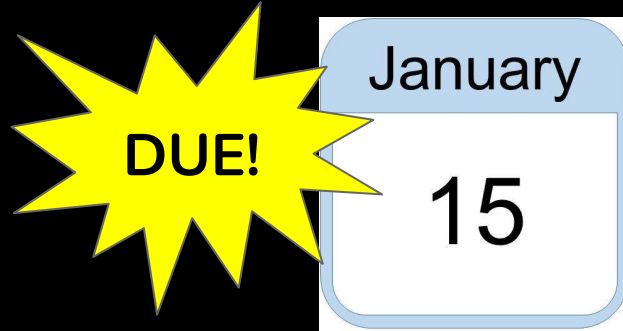


1. Select the academy and electives that best **match your strengths AND interests**. You will be in these electives and academy all year. It needs to be the **right fit for YOU!**
2. Elective changes during the school year are **reserved for academic needs**. Choose wisely!
3. Consider how your selection **will impact your time** both in school and outside of school. (homework, practice, performance)
4. **Consult with an adult at home** before submitting your registration.

Please submit your course registration through Google Forms  
no later than:

Wednesday, January 15th

Priority selections given to those submitted by the deadline



# Questions?

Visit the PCMS website at:

➤ [PCMS Registration Page](#)

*And/OR*

➤ Email Your Counselor:

○ Legacy:

■ Ms. Clausius

○ Empower/Flex/Design:

■ Ms. Besand

