



PARKWAYSCHOOLS

HIGHER EXPECTATIONS. BRIGHTER FUTURES.

Financial Statements

February 2024

PARKWAY SCHOOL DISTRICT
MONTHLY FINANCIAL REPORT
TABLE OF CONTENT

<u>DOCUMENT</u>	<u>PAGE</u>
EXECUTIVE SUMMARY.	1 - 2
GRAPHS - REVENUE, EXPENDITURE, CASH, AND FUND BALANCE .	3 – 5
RECAPITULATION OF FUNDS.	6
ACCRUAL BALANCE SHEET.	7
BREAKOUT OF CASH AND INVESTMENTS.	8
GRANTS FROM CARES ACT: COVID 19	9
MODIFIED ACCRUAL REVENUE SCHEDULE	10
EXPENDITURE SUMMARY BY OBJECT	11
FOOD SERVICE STATEMENT	12
EXPENDITURE SUMMARY BY BUILDING	13
EXPENDITURE SUMMARY - CONSOLIDATED.	14 - 17
EXPENDITURE SUMMARY BY PROGRAM	18
GLOSSARY	19- 20
PURCHASING REPORTS	21 – 34



TO: Board of Education

DATE: March 28, 2024

FROM: Patricia Bedborough, CPA

RE: Executive Summary February 2024

Abstract

The February financials are attached. The prior year data has been updated to reflect the final fiscal year 2023. You will notice that our revenues from our local sources have decreased as compared to last year. Our local collections are down by over \$15 million as compared to last year. The latest report on payments paid under protest has been posted, and the amount for our district is \$52 million. This has increased substantially over the prior year. In addition, we have a net payback of \$3.4 million for prior years protest tax settlements. We may want to consider a reserve for protest tax settlements once we receive the payment for the outstanding taxes in the spring. Our M&M Surplus revenue has decreased substantially from prior year. Our federal revenues and other revenues are lower than last year due to lower ESSER funds remaining and delayed submission of grants. The largest difference is the timing of the other transportation revenue received in prior year and not in this year. Expenditures are slightly higher than last year, but are in line with the budget. One item of note is that capital expenditures are lower than last year due to lower payments on bond projects and the annual bus delivery has not been received yet.

Future Issues

The following issues are still pending and could affect district finances in the future:

1. Health Insurance Costs – Health costs are a large portion of our benefit expenses. Our pharmacy benefit manager is through Business Health Coalition and we have substantial savings over market trends for our pharmacy. With the implementation of CVS as our PBM, we have seen savings and a reduction of the market increases. We opened our near site clinics for our employees and staff effective August 2018 and selected Care ATC as our continued provider. We had no increase in our premiums for 2023 and 2024 and our only plan change is the change in the HD plan deductible.
2. Commercial Property Assessments Appeals – As you are aware this has been a struggle over the last several years. We have seen our collection rate fluctuate due to these settlements. We worked with the state auditor's office last year and have approved \$3.7 million in recoupment. We are delaying the levy of the recoupment to future years. We received our report for taxes levied for 2023 and have \$52 million paid under protest. We have also received over a \$3.4 million in reductions due to the settlement of prior year claims.

3. New Construction Assessments - In September we received our final amounts from St. Louis County. We had another strong year with new construction with just over \$16 million in commercial and residential property and \$28 million in new personal property mainly attributed to the increased value of used cars.
4. Interest Income –Our interest from our banking account is budgeted to increase significantly due to the Fed's increasing the treasury rate. Our current rate earned is 5.64%.
5. State Revenue –DESE will be basing our formula calculation on our attendance from two years ago. With the pandemic, our lowest attendance year was last year.
6. Spot Market Purchases – For information purposes, fiscal year-to-date purchases under the spot market procurement policy are as follows:

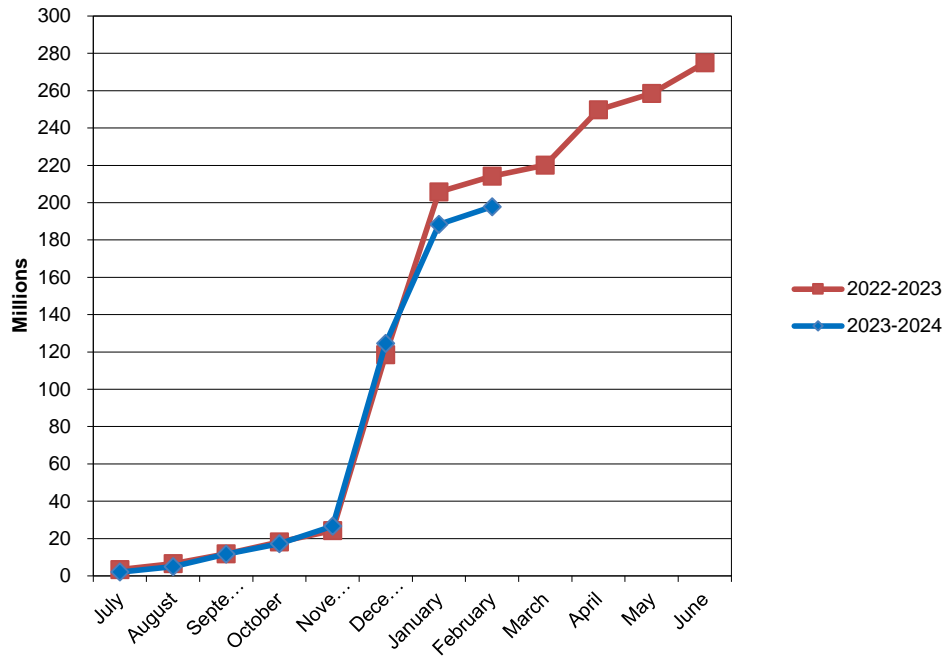
Fuel (Facilities) \$ 160,285.23

Fuel (Trans) \$ 245,287.05

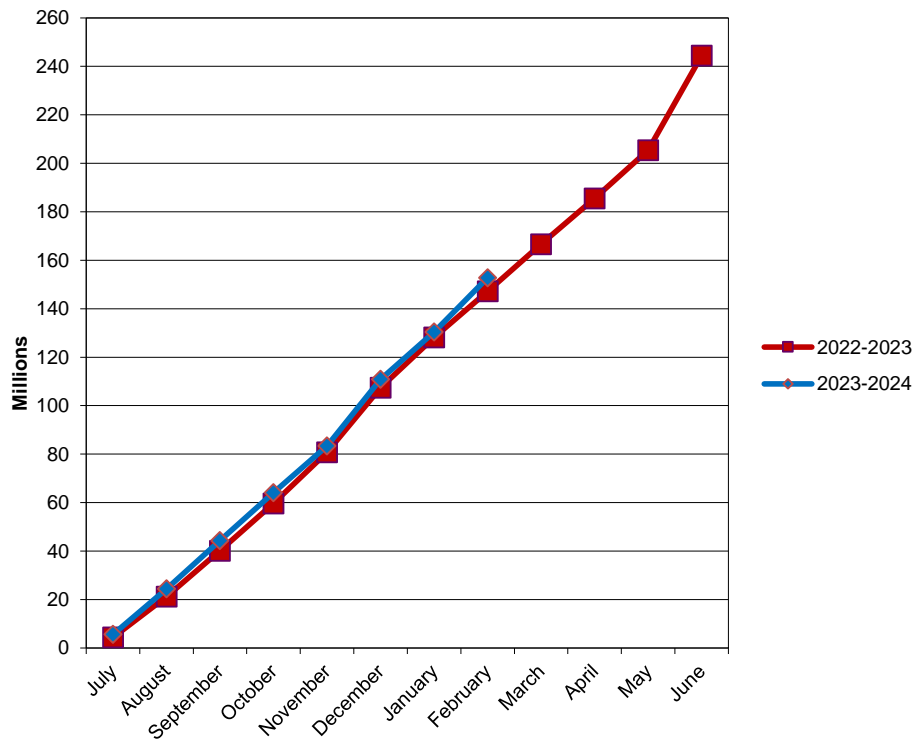
Paper \$ 149,538.90

Trash Liner \$

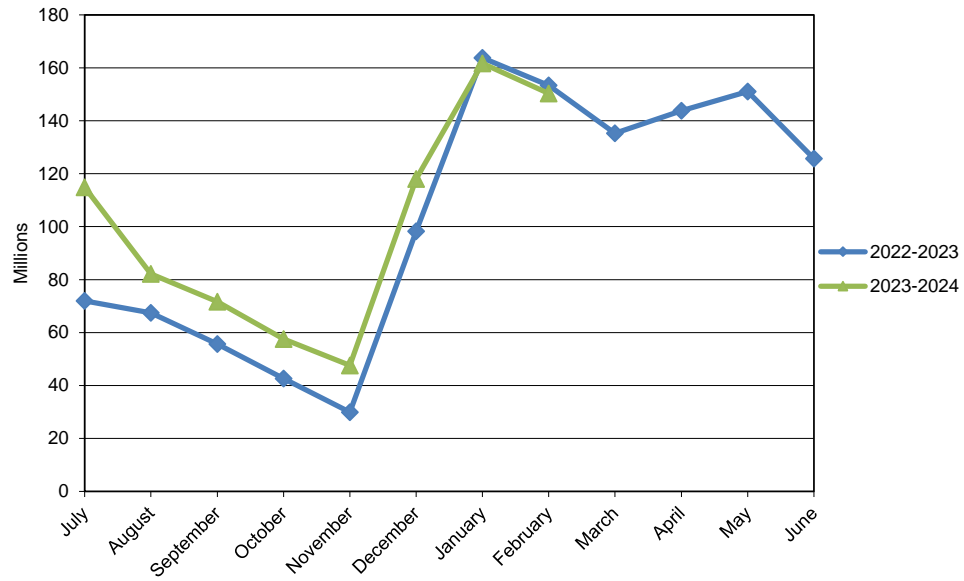
PARKWAY SCHOOL DISTRICT ACTUAL OPERATING REVENUE



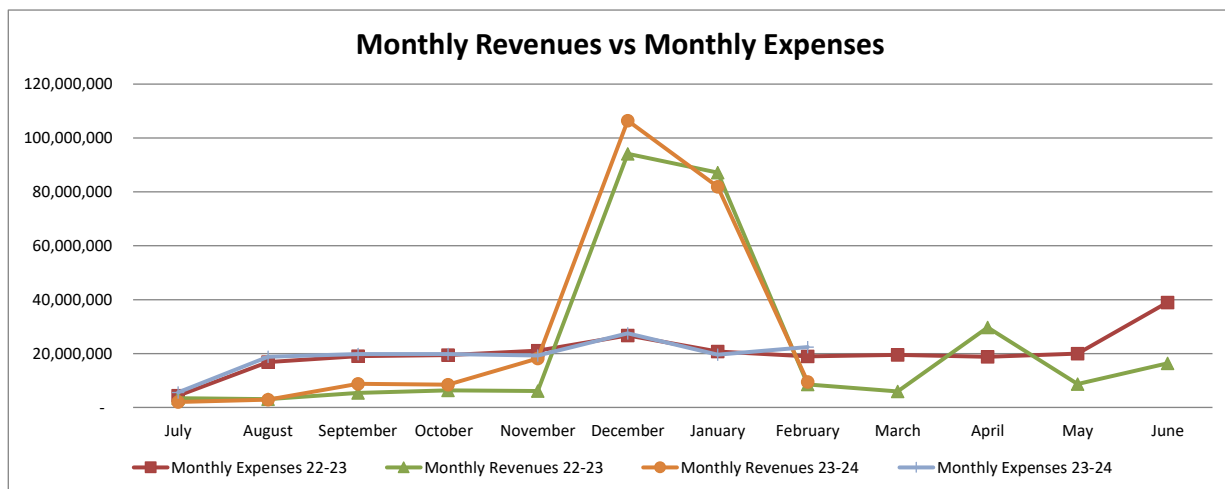
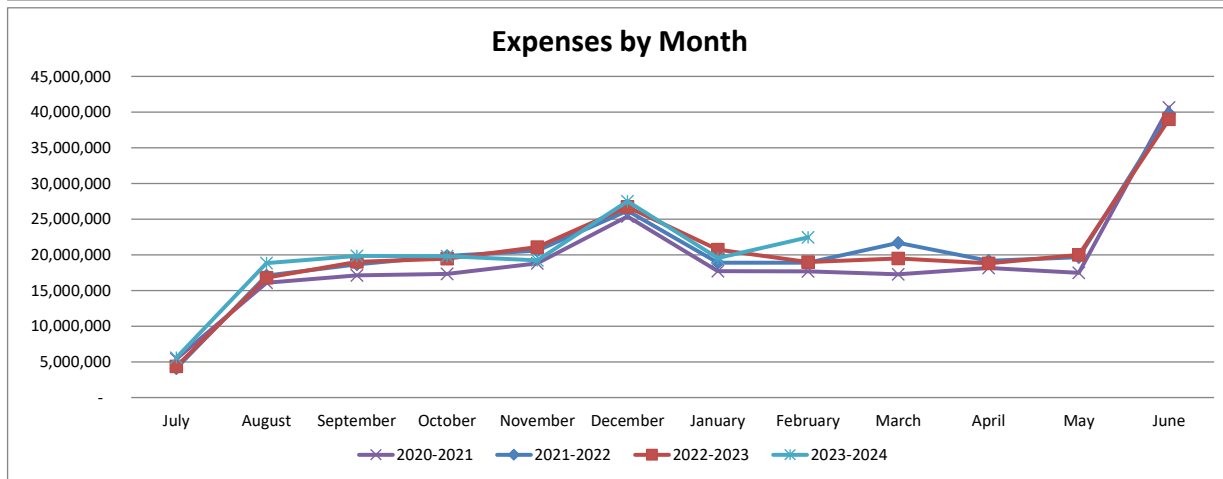
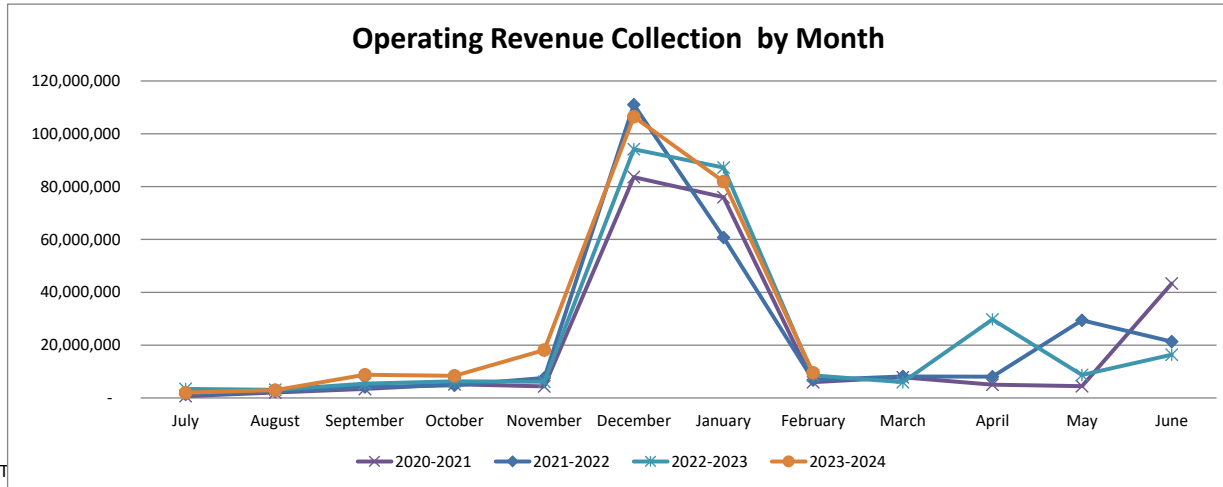
PARKWAY SCHOOL DISTRICT ACTUAL OPERATING EXPENDITURES



PARKWAY SCHOOL DISTRICT OPERATING FUND CASH AND INVESTMENTS



ACT



**Parkway School District
Recapitulation of Funds
Budget 2023-2024 With Restatement of Opening Balances**

FY2024 Full Year Budget

	Operating	Debt Service	Capital Projects	2018 Bond Issue	2022 Bond Issue	All Funds
Beginning Fund Balance	106,075,200	23,592,125	24,535,103	6,883,420	94,438,823	255,524,671
Revenues	281,758,771	31,652,012	3,776,583	50,000	1,000,000	318,237,366
Expenses	267,817,498	26,607,185	5,467,407	6,906,435	51,076,237	357,874,762
Transfers	(8,000,000)	-	8,000,000	-	-	-
Ending Fund Balance	112,016,473	28,636,952	30,844,279	26,985	44,362,586	215,887,275

ACTUAL FY24 THROUGH 2/29/2024

	Operating	Debt Service	Capital Projects	2018 Bond Issue	2022 Bond Issue	All Funds
Beginning Fund Balance	106,075,200	23,592,125	24,535,103	6,883,420	94,438,823	255,524,671
Revenues	197,821,625	24,060,260	2,351,923	27,913	3,076,779	227,338,500
Expenses	152,794,386	26,592,228	1,621,409	4,558,556	15,543,161	201,109,740
Transfers	-	-	-	-	-	-
Ending Fund Balance	151,102,439	21,060,157	25,265,617	2,352,777	81,972,441	281,753,431

ACTUAL FY23 THROUGH 2/28/23

	Operating	Debt Service	Capital Projects	2018 Bond Issue	2022 Bond Issue	All Funds
Beginning Fund Balance	81,810,866	16,948,311	19,884,393	37,356,104	-	155,999,674
Revenues	214,187,513	24,411,648	3,305,062	581,519	-	242,485,742
Expenses	147,184,849	22,425,824	5,256,947	23,067,024	8,203	197,942,847
Transfers	-	-	-	-	-	-
Ending Fund Balance	148,813,530	18,934,135	17,932,508	14,870,599	(8,203)	200,542,569

**PARKWAY SCHOOL DISTRICT
ACCRUAL BALANCE SHEET
February 29, 2024**

	TOTAL- ALL FUNDS 2/29/2024	TOTAL- ALL FUNDS 2/28/2023
ASSETS		
Cash & Investments	292,620,040	221,326,346
Accounts Receivable	6,200	182,173
Inventories	966,309	1,069,536
Prepaid Expenses	3,904,126	4,020,146
Land	3,457,837	3,457,837
Land Improvements	19,905,904	17,375,608
Buildings/Improvements	202,329,603	201,550,105
Construction in Progress	80,601,628	48,759,117
Equipment	14,083,049	9,291,824
	<hr/>	<hr/>
Total Assets	617,874,696	507,032,692
	<hr/>	<hr/>
LIABILITIES & FUND BALANCE		
Accounts Payable - Operating Funds	313,192	2,797,421
Accounts Payable - Bond Issue Funds	-	143,555
Accounts Payable - Capital Projects Funds	48,650	14,860
Accounts Payable - Medical Fund	86,899	274,451
Wages, Payroll Taxes, and Benefits Payable	3,758,667	6,987,905
Bonds Payable	303,365,000	227,965,000
Interest Payable	2,593,953	2,596,764
Liability for Compensated Absences	1,462,357	1,613,494
	<hr/>	<hr/>
Total Liabilities	311,628,718	242,393,450
Bond Issue Fund Balance (combined 2018 and 2022)	84,325,218	14,862,396
Debt Service Fund Balance	21,060,157	18,934,135
Capital Projects Fund Balance	25,265,617	17,932,508
Equity in Fixed Assets less Long Term Liabilities	12,956,711	48,259,233
Medical Fund Balance	11,535,836	15,837,440
Operating Fund Balance	151,102,439	148,813,530
	<hr/>	<hr/>
Total Fund Balance	306,245,978	264,639,242
	<hr/>	<hr/>
TOTAL LIABILITIES & FUND BALANCE	617,874,696	507,032,692

BREAKOUT OF CASH & INVESTMENT BALANCE

	<u>2/29/2024</u>	<u>2/28/2023</u>
MEDICAL FUND CASH	11,622,735	16,111,891
DEBT SERVICE FUND CASH	21,060,157	15,550,005
DEBT SERVICE FUND INVESTMENTS	-	3,384,117
BOND ISSUE FUND CASH	84,298,231	14,978,966
CAPITAL PROJECTS FUND CASH	25,341,251	17,974,350
OPERATING FUND CASH	150,288,809	78,318,634
OPERATING FUND INVESTMENTS	8,857	75,008,383
	<hr/>	<hr/>
TOTAL	292,620,040	221,326,346

RESTRICTED RESERVE

	<u>2/29/2024</u>	<u>2/28/2023</u>
FOOD SERVICE	(807,221)	(1,621,659)
MEDICAL BENEFITS	11,535,836	15,837,440
STUDENT ACTIVITY	4,509,728	3,917,896
	<hr/>	<hr/>
TOTAL	15,238,343	18,133,677

Grants from Covid-19 Stimulus Funds

Grant	Award	Received	Spent through 1/31/2024	Status	Description
Cares Act - ESSER	875,664	875,644	875,664	approved - fully received and fully spent	Utilized for salaries and benefits during closure. \$190,000 of grant is for non public schools.
Coronavirus Relief Fund(CRF)	1,199,707	1,199,707	1,199,707	approved - fully received and fully spent	Grant expenses include PPE, care coordinators and digital learning expenses. \$77,389 of this grant will be paid to VICC.
Covid-19 Response Supply Grant	502,883	502,883	502,883	approved - fully spent and received	This grant is a 75/25% split between the County and state. PPE, partitions and sanitation supplies were applied against this grant.
Student Connectivity Grant - B	112,000	112,000	112,000	approved - fully spent and received	Grant is a 50% reimbursement for hot spots
Transportation Supplement	153,918	97,843	100,821	Parkway spent all funds allocated to Parkway. Remainder is related to non-publics.	Grant is primarily for transportation PPE and sanitation supplies and summer school expenses for buses. Have until 9/30/22 to spend the funds.
Cares Act - unemployment	TBD	178,482	356,964	This is auto applied to our unemployment bills. Currently have a credit on our bills.	Reimburses District for 50% of unemployment expenses
County Early Cares Child Care Reponse Program	100,950	100,950	100,950	approved and fully spent	Costs incurred to child care facilities in St. Louis County for business interruption expenses and compliance with health and safety measures
ESSER II	5,378,360	5,378,360	5,378,360	approved - fully received and fully spent	Uses include PPE, air quality improvements, digital learning expenses, sub costs related to COVIDS absences, contact tracers, counselors and care coordinators over the next two fiscal years.
ESSER III*	12,062,592	6,455,549	11,526,197	This grant will go through the FY24 school year	Similar to ESSER II with the addition of summer school expenses, reading specialist, and instructional coaches. Have until 9/30/24 to spend the funds. 20% of the grant must address learning loss.
Teacher Retention Grant	615,000	500,000	615,000	approved - mostly spent. Working with DESE to finalize remaining portion	Used for stipends and future scholarships
Totals	21,176,006	15,401,418	21,001,789		

PARKWAY SCHOOL DISTRICT
MODIFIED ACCRUAL REVENUE SCHEDULE
TOTAL ALL FUNDS

	YEAR TO DATE 2/29/2024				YEAR TO DATE 2/28/2023				CHANGE FROM PRIOR YEAR	
	BUDGETED REVENUE	REVENUE REALIZED	% REALIZED	BALANCE TO BE REALIZED	REVENUE 6/30/23	REVENUE REALIZED	% REALIZED	BALANCE TO BE REALIZED	\$	%
LOCAL										
Property Taxes	199,123,710	156,776,982	78.73%	42,346,728	191,706,318	167,632,120	87.44%	24,074,198	(10,855,138)	-6.48%
Delinquent Property Taxes	-	(3,360,166)	0.00%	3,360,166	785,752	-	0.00%	785,752	(3,360,166)	0.00%
Prop C	19,085,300	11,407,884	59.77%	7,677,416	20,653,883	10,449,555	50.59%	10,204,328	958,329	9.17%
M&M Surtax	5,862,389	2,818,643	48.08%	3,043,746	5,685,768	4,232,655	74.44%	1,453,113	(1,414,012)	-33.41%
Food Service	4,173,309	2,829,915	67.81%	1,343,394	3,542,580	2,185,318	61.69%	1,357,262	644,597	29.50%
Other Local	5,293,221	2,713,903	51.27%	2,579,318	4,726,110	2,259,434	47.81%	2,466,676	454,469	20.11%
VICC-VST Revenue	5,180,823	1,450,412	28.00%	3,730,411	5,734,943	2,221,065	38.73%	3,513,878	(770,652)	-34.70%
TOTAL LOCAL	238,718,752	174,637,573	73.16%	64,081,179	232,835,354	188,980,147	81.16%	43,855,207	(14,342,573)	-7.59%
INTEREST	6,297,760	5,997,033	95.22%	300,727	5,332,213	2,702,042	50.67%	2,630,171	3,294,991	121.94%
COUNTY	3,542,740	1,380,609	38.97%	2,162,131	3,805,545	1,279,962	33.63%	2,525,583	100,647	7.86%
STATE										
Basic Formula	2,017,989	1,421,414	70.44%	596,575	2,544,950	1,837,423	72.20%	707,527	(416,009)	-22.64%
Classroom Trust	6,694,370	4,459,617	66.62%	2,234,753	6,601,549	4,402,417	66.69%	2,199,132	57,200	1.30%
Transportation	4,900,000	2,879,325	58.76%	2,020,675	4,942,384	3,277,414	66.31%	1,664,970	(398,089)	-12.15%
Other State	2,051,406	967,250	47.15%	1,084,156	1,636,838	935,321	57.14%	701,517	31,929	3.41%
TOTAL STATE	15,663,765	9,727,606	62.10%	5,936,159	15,725,721	10,452,575	66.47%	5,273,146	(724,969)	-6.94%
FEDERAL										
Federal Food Service	2,302,891	1,217,309	52.86%	1,085,582	3,834,617	2,398,255	62.54%	1,436,362	(1,180,946)	-49.24%
Other Federal Entitlements	9,190,124	1,192,664	12.98%	7,997,460	6,134,525	4,087,801	66.64%	2,046,724	(2,895,137)	-70.82%
TOTAL FEDERAL	11,493,015	2,409,973	20.97%	9,083,042	9,969,142	6,486,056	65.06%	3,483,086	(4,076,083)	-62.84%
OTHER FINANCING SOURCES										
Transportation Reimbursement	2,508,450	1,220,367	48.65%	1,288,083	4,194,774	2,187,290	52.14%	2,007,484	(966,923)	-44.21%
Tuition From Other Districts	28,930	7,020	24.27%	21,910	17,701	17,701	100.00%	-	(10,681)	-60.34%
Sale Of Property	5,359	4,896	91.36%	463	13,337	10,955	82.14%	2,382	(6,059)	-55.31%
TOTAL OTHER FINANCING SOURCES	2,542,739	1,232,283	48.46%	1,310,456	4,225,812	2,215,946	52.44%	2,009,866	(983,663)	-44.39%
SUB-TOTAL OPERATING REVENUE	278,258,771	195,385,077	70.22%	82,873,694	271,893,787	212,116,728	78.01%	59,777,059	(16,731,650)	-7.89%
STUDENT ACTIVITIES	3,500,000	2,436,548	69.62%	1,063,452	3,635,297	2,070,785	56.96%	1,564,512	365,763	17.66%
TOTAL OPERATING REVENUE	281,758,771	197,821,625	70.21%	83,937,146	275,529,084	214,187,513	77.74%	61,341,571	(16,365,887)	-7.64%
NON-OPERATING REVENUES										
2018 Bond Issue Interest/Premium	50,000	27,913	55.83%	22,087	601,035	581,519	96.75%	19,516	(553,606)	-95.20%
2022 Bond Issue Interest/Premium	1,000,000	3,076,779		(2,076,779)	9,584,634	-			0.00%	0.00%
2022 Sale of Bonds	-	-		-	90,000,000	-			0.00%	0.00%
Debt Service Property Taxes	30,014,341	23,629,670	78.73%	6,384,671	27,250,633	23,828,522	87.44%	3,422,111	(198,852)	-0.83%
Debt Service Delinquent Prop. Taxes	-	(507,258)	0.00%	507,258	111,693	-	0.00%	111,693	(507,258)	0.00%
Debt Service Interest/Premium	900,000	774,473	86.05%	125,527	953,549	425,594	44.63%	527,955	348,879	81.97%
Debt Service County Revenue	737,671	163,375	22.15%	574,296	754,399	157,532	20.88%	596,867	5,843	3.71%
Cap. Projects Property Taxes	2,921,804	2,301,021	78.75%	620,783	3,392,115	2,966,098	87.44%	426,017	(665,077)	-22.42%
Cap. Projects Delinquent Prop. Taxes	-	(49,032)	0.00%	-	13,905	-	0.00%	13,905	(49,032)	0.00%
Capital Projects Local	292,320	37,016	12.66%	255,304	449,484	338,001	75.20%	111,483	(300,985)	-89.05%
Capital Projects M&M Surtax	-	41,359	0.00%	(41,359)	-	-		-		
Capital Projects County	99,897	20,340	20.36%	79,557	-	-		-	20,340	0.00%
Capital Projects Federal/Other	-	-	0.00%	-	-	-		-	-	0.00%
Capital Interest/Premium	462,562	1,219	0.26%	461,343	2,918	963	33.00%	1,955	256	26.58%
TOTAL ALL REVENUE SOURCES	318,237,366	227,338,500	71.44%	90,898,866	408,643,450	242,485,742	59.34%	166,157,708	(15,147,241)	-6.25%

EXPENDITURE SUMMARY BY OBJECT
TOTAL ALL FUNDS
February 29, 2024

	BUDGET 2023-2024	ACTUAL EXPENDITURES YTD 2/29/2024	% EXPENDED 2023-2024	ACTUAL** EXPENDITURES 06/30/2023	ACTUAL EXPENDITURES YTD 2/28/2023	% EXPENDED 2022-2023	CHANGE FROM PRIOR YEAR	
							\$	%
SALARIES								
Certificated	124,808,098	71,208,882	57.05%	118,628,031	69,338,217	58.45%	1,870,665	2.70%
Classified	38,222,775	22,478,509	58.81%	34,855,333	21,729,861	62.34%	748,648	3.45%
TOTAL SALARIES	163,030,873	93,687,391	57.47%	153,483,364	91,068,078	59.33%	2,619,313	2.88%
BENEFITS								
Retirement, Social Security, and Medicare	42,159,989	15,778,550	37.43%	25,956,135	15,398,073	59.32%	380,477	2.47%
Medical, Dental, WC, and Life Insurance	13,972,993	15,384,988	110.11%	25,257,427	15,376,446	60.88%	8,542	0.06%
TOTAL BENEFITS	56,132,982	31,163,538	55.52%	51,213,562	30,774,519	60.09%	389,019	1.26%
PURCHASED SERVICES								
Substitute Services	3,477,181	2,075,793	59.70%	2,981,134	1,815,042	60.88%	260,751	14.37%
Tuition	913,126	258,035	28.26%	520,139	175,065	33.66%	82,970	47.39%
Professional Services	3,589,817	1,377,022	38.36%	2,599,582	1,332,236	51.25%	44,786	3.36%
Audit	45,000	40,000	88.89%	33,500	31,000	92.54%	9,000	29.03%
Technical Services	143,254	121,125	84.55%	80,868	65,786	81.35%	55,339	84.12%
Legal Services	200,000	94,569	47.28%	210,837	94,629	44.88%	(60)	-0.06%
Property Services	4,223,236	2,085,188	49.37%	3,041,511	1,931,351	63.50%	153,837	7.97%
Travel & Contracted Trans.	2,095,801	884,613	42.21%	2,597,126	1,190,198	45.83%	(305,585)	-25.68%
Property Insurance	1,161,562	1,215,243	104.62%	1,009,105	1,009,105	100.00%	206,138	20.43%
Liability Insurance	1,228,993	1,130,466	91.98%	800,254	800,254	100.00%	330,212	41.26%
Other Purchased Services	5,803,259	2,723,695	46.93%	4,369,997	2,351,129	53.80%	372,566	15.85%
TOTAL PURCHASED SERVICES	22,881,229	12,005,749	52.47%	18,244,053	10,795,795	59.17%	1,209,954	11.21%
CONSUMABLES								
General Supplies	8,233,233	3,874,847	47.06%	6,197,631	4,424,157	71.38%	(549,310)	-12.42%
Instructional Supplies	8,136,856	5,529,033	67.95%	5,010,834	4,205,079	83.92%	1,323,954	31.48%
Textbooks and Library Books	1,978,023	956,299	48.35%	775,147	547,884	70.68%	408,415	74.54%
Gasoline/Diesel	858,503	461,881	53.80%	763,665	466,254	61.05%	(4,373)	-0.94%
Energy Services	3,917,000	2,393,328	61.10%	3,731,593	2,237,294	59.96%	156,034	6.97%
Food Service Supplies	2,648,800	1,177,492	44.45%	2,175,174	1,304,567	59.98%	(127,075)	-9.74%
TOTAL CONSUMABLES	25,772,414	14,392,880	55.85%	18,654,044	13,185,235	70.68%	1,207,645	9.16%
SUBTOTAL OPERATING EXPENSES	267,817,498	151,249,558	56.47%	241,595,023	145,823,627	60.36%	5,425,931	3.72%
STUDENT ACTIVITIES	3,500,000	1,544,828	44.14%	2,969,149	1,361,222	45.85%	183,606	-1.71%
ANTICIPATED EXPENDITURE SAVINGS	(3,500,000)	-	0.00%	-	-	0.00%	-	0.00%
TOTAL OPERATING EXPENSES	267,817,498	152,794,386	57.05%	244,564,172	147,184,849	60.18%	5,609,537	3.81%
CAPITAL OUTLAY - NON BOND EXPENSES								
Land Improvement	175,000	1,000	0.57%	49,750	49,750	100.00%	(48,750)	100.00%
Building Alterations	2,174,000	513,955	23.64%	1,986,261	1,934,794	97.41%	(1,420,839)	-73.44%
General Equipment	1,170,341	527,120	45.04%	1,119,031	922,920	82.47%	(395,800)	-42.89%
Instructional Equipment	187,378	133,201	71.09%	196,576	114,255	58.12%	18,946	16.58%
Technology Equipment	17,498	75,025	428.76%	798,915	702,762	87.96%	(627,737)	-89.32%
Student Activity	-	151,111	0.00%	210,608	105,247	49.97%	45,864	43.58%
Vehicles	282,716	100,069	35.40%	178,385	178,385	100.00%	(78,316)	-43.90%
School Buses	1,340,546	-	0.00%	1,204,273	160,076	13.29%	(160,076)	-100.00%
TOTAL CAPITAL OUTLAY	5,347,479	1,501,481	28.08%	5,743,799	4,168,189	72.57%	(2,666,708)	-63.98%
2018 BOND ISSUE EXPENDITURES	6,906,435	4,558,556	66.00%	31,073,719	23,067,024	74.23%	(18,508,468)	-80.24%
2022 BOND ISSUE EXPENDITURES	51,076,237	15,543,161	30.43%	5,145,811	8,203	0.16%	15,534,958	189381.42%
CAPITAL FUND - BUS LEASES	119,928	119,928	100.00%	164,490	1,088,758	661.90%	(968,830)	-88.98%
DEBT SERVICE - GO BONDS	26,607,185	26,592,228	99.94%	22,426,460	22,425,824	100.00%	4,166,404	18.58%
GRAND TOTAL EXPENSES	357,874,762	201,109,740	56.20%	309,118,453	197,942,847	64.03%	3,166,893	1.60%

**FOOD SERVICE
STATEMENT OF INCOME AND EXPENSE
February 29, 2024**

	BUDGET FY24	CURRENT MONTH	ACTUAL EXPENDITURES YTD 02/29/24	% EXPENDED	PRIOR YEAR ACTUAL FY23	PRIOR YEAR TO DATE YTD 02/28/2023	PRIOR YEAR % EXPENDED
RESERVE FOOD SERVICE SURPLUS		(\$873,790)	(\$991,780)		(\$1,493,867)	(\$2,147,182)	
INCOME							
LOCAL	4,173,309	435,835	2,829,915	67.81%	3,542,580	2,185,318	52.20%
STATE	19,548	-	-	0.00%	28,558	-	18.53%
FEDERAL	2,302,891	209,078	1,217,309	52.86%	3,834,617	1,512,871	59.94%
TOTAL INCOME	6,495,748	644,913	4,047,225	62.31%	7,405,755	3,698,189	49.94%
COST OF GOODS SOLD:							
Beginning Inventory		232,893	206,714		150,692	150,692	100.00%
Add: Purchases-Food	2,648,800	177,142	1,262,826	47.68%	2,175,174	1,304,567	56.16%
Purchases-Other	-	-	-	0.00%	1,320	720	80.15%
Goods Available		410,035	1,469,540		2,327,186	1,455,979	67.45%
Less: Ending Inventory		210,841	210,841		180,312	368,917	104.54%
TOTAL COST OF GOODS	2,648,800	199,194	1,258,699	47.52%	2,146,874	1,087,062	50.63%
GROSS MARGIN	\$3,846,948	445,719	2,788,526	72.49%	5,258,880	2,611,127	49.65%
OPERATION COSTS:							
Salaries	1,864,243	60,660	497,599	26.69%	1,112,911	766,015	70.87%
Fringe Benefits	1,020,067	35,479	257,541	25.25%	621,703	420,843	70.19%
Purchased Services	2,598,643	291,904	1,796,537	69.13%	2,787,263	1,562,832	75.54%
Operating Supplies	72,170	6,015	43,412	60.15%	58,164	51,435	93.95%
Credit for Services	-	(14,907)	(85,333)	100.00%	(109,776)	(59,178)	48.80%
Total Operating Costs	5,555,123	379,151	2,509,755	45.18%	4,470,266	2,741,948	61.34%
INCOME (LOSS) FROM OPERATIONS	(1,708,175)	66,568	278,771		788,614	(130,822)	-16.59%
EQUIPMENT	200,000	-	94,212	47.11%	286,528	264,318	96.49%
RESERVE FOOD SERVICE SURPLUS		(\$807,221)	(\$807,221)		(\$991,780)	(\$2,542,322)	256.34%

**Parkway School District
Building Location Recap Report**

Fiscal Year 2024 Through Period 8 Run Date: 03-18-2024 @ 13:19:54

	Budget	Expended	Encumbrances	Unexpended
FERN RIDGE HIGH	42,753.62	15,899.19	0.00	26,854.43
CENTRAL HIGH	296,748.00	138,597.75	12,547.39	145,602.86
NORTH HIGH	262,995.00	125,703.98	13,559.75	123,731.27
WEST HIGH	400,068.00	139,527.70	35,042.49	225,497.81
SOUTH HIGH	406,669.00	174,348.38	20,546.20	211,774.42
SOUTHWEST MIDDLE	116,457.58	98,634.22	1,541.26	16,282.10
CENTRAL MIDDLE	160,986.00	113,835.63	1,836.48	45,313.89
NORTHEAST MIDDLE	130,610.01	81,404.87	1,175.75	48,029.39
SOUTH MIDDLE	91,884.00	54,495.40	5,111.97	32,276.63
WEST MIDDLE	203,049.22	115,464.10	15.00	87,570.12
MCKELVEY PRIMARY	37,853.64	18,899.82	3,021.00	15,932.82
BARRETS ELEM.	53,039.37	40,304.29	143.53	12,591.55
BELLERIVE ELEM.	77,525.34	29,225.53	6,771.40	41,528.41
CARMAN TRAILS ELEM.	77,966.00	35,099.51	0.00	42,866.49
CLAYMONT ELEM.	100,883.26	53,943.65	1,200.40	45,739.21
CRAIG ELEM.	62,391.52	42,016.34	2,013.00	18,362.18
GREEN TRAILS ELEM.	76,752.24	40,134.91	129.77	36,487.56
HANNA WOODS ELEM.	90,852.97	28,207.00	0.00	62,645.97
HENRY ELEM.	74,834.00	60,312.09	992.43	13,529.48
HIGHCROFT ELEM.	52,540.00	43,042.70	0.00	9,497.30
MASON RIDGE ELEM.	84,987.00	55,378.59	1,012.67	28,595.74
MCKELVEY INTERMEDIATE	66,035.05	38,952.14	6,711.59	20,371.32
OAK BROOK ELEM.	65,042.00	46,335.97	818.34	17,887.69
PIERREMONT ELEM.	101,878.00	54,403.02	1,996.28	45,478.70
RIVER BEND ELEM.	53,392.00	27,436.14	0.00	25,955.86
ROSS ELEM.	78,761.70	42,417.52	7,663.81	28,680.37
SORRENTO SPRINGS ELEM.	54,969.74	40,070.96	423.02	14,475.76
SHENANDOAH VALLEY ELEM.	84,137.62	56,703.75	0.00	27,433.87
WREN HOLLOW ELEM.	70,758.32	40,999.13	16.88	29,742.31
 Grand Total for Funds 10-12	 3,338,201.20	 1,708,803.38	 97,662.52	 1,531,735.30
Grand Total for Fund 20	0.00	20,203.24	0.00	-20,203.24
Grand Total for Fund 30	0.00	0.00	0.00	0.00
Grand Total for Funds 40-41	138,619.00	122,787.66	26,627.89	-10,796.55
Grand Total All	3,476,820.20	1,851,794.28	124,290.41	1,500,735.51

**Parkway School District
Consolidated Budget - Programs Recap Report**

Fiscal Year 2024 Through Period 8 Run Date: 03-18-2024 @ 13:21:40

	Budget	Expended	Encumbrances	Unexpended
SPECIAL READING	21,976.00	14,604.89	1,511.99	5,859.12
COMM ARTS	145,883.00	72,609.46	909.96	72,363.58
MATHEMATICS	63,268.00	26,768.66	1,607.85	34,891.49
FINE ARTS	142,629.00	94,283.06	10,959.14	37,386.80
PHYSICAL EDUCATION	70,736.97	37,888.21	3,469.76	29,379.00
SCIENCE	103,264.00	48,527.88	1,912.25	52,823.87
SOCIAL STUDIES	86,731.44	38,859.98	1,696.00	46,175.46
INSTRUCTIONAL TECHNOLOGY	73,499.00	35,828.81	1,094.00	36,576.19
GUIDANCE	28,942.19	12,601.02	0.00	16,341.17
ART	138,099.05	106,027.38	16,107.69	15,963.98
BLDG ADMIN SERVICES	3,228,604.55	1,145,138.34	50,247.07	2,033,219.14
AUDIO VISUAL SERVICES	1,300.00	233.50	0.00	1,066.50
BUSINESS EDUCATION	35,248.00	6,629.56	0.00	28,618.44
MODERN CLASSICAL LANG	40,094.00	16,739.14	0.00	23,354.86
FAMILY AND CONSUMER SC	78,436.00	45,824.37	5,927.00	26,684.63
INDUSTRIAL ARTS	46,948.00	30,452.57	11,890.77	4,604.66
STUDENT BODY ACT	116,253.00	61,660.57	12,225.00	42,367.43
COOP VOC ED	3,184.00	108.95	0.00	3,075.05
UNIFIED STUDIES	2,255.00	884.83	0.00	1,370.17
SPEECH	22,429.00	8,655.29	0.00	13,773.71
LIBRARY SVCS	82,794.00	38,247.18	4,687.89	39,858.93
HEALTH ED	7,693.00	2,698.87	0.00	4,994.13
EEE CAMP	3,675.00	9,645.37	15.00	-5,985.37
ESOL	3,770.00	1,102.30	0.00	2,667.70
GIFTED EDUCATION	9,704.00	4,145.28	29.04	5,529.68
SPECIAL SERVICES	300.00	158.14	0.00	141.86
INSTRUCTIONAL STAFFING	153,653,134.07	81,839,402.67	0.00	71,813,731.40
BLDG LEVEL STAFFING	17,153,634.49	11,247,608.85	0.00	5,906,025.64
ATHLETICS	2,042,983.30	1,062,392.46	117,579.16	863,011.68
ADULT BASIC EDUCATION	394,763.91	800,629.50	3,500.00	-409,365.59
SWIM CLUB	491,190.25	296,756.77	67,851.00	126,582.48
EARLY CHILDHOOD	1,847,838.82	1,347,274.65	2,250.00	498,314.17
PRESCHOOLS	2,741,072.64	1,598,347.83	0.00	1,142,724.81
PARK ROCK COMM ED	100,433.00	24,983.96	9,109.73	66,339.31
STUDENT SERVICES	1,496,661.25	882,685.03	254,583.92	359,392.30
PUPIL PERSONNEL	1,987,588.60	1,156,651.24	0.00	830,937.36
HEALTH SERVICES	2,733,706.45	1,734,932.21	17,461.45	981,312.79
GUIDANCE AND COUNSELING	256,563.17	136,197.65	4,500.00	115,865.52

**Parkway School District
Consolidated Budget - Programs Recap Report**

Fiscal Year 2024 Through Period 8 Run Date: 03-18-2024 @ 13:21:41

	Budget	Expended	Encumbrances	Unexpended
SEB SUPPORT	264,842.08	137,644.76	0.00	127,197.32
DATA MGMT/RESEARCH	438,066.59	206,366.71	22,900.54	208,799.34
STUDENT DISC & ALT STUDIES	500,854.02	300,503.09	0.00	200,350.93
SPECIAL SERVICES	385,628.33	232,862.54	0.00	152,765.79
ASST SUPER OF STUDENT SERV	363,478.55	170,528.89	10,406.00	182,543.66
TEACH LEARN ACCOUNTABILITY	5,679,770.02	3,240,761.11	513,406.02	1,925,602.89
PROFESSIONAL LEARNING	1,366,868.39	521,018.14	14,327.50	831,522.75
READING DIAGNOSTICS	108,578.71	65,164.67	0.00	43,414.04
INSTRUC TECH LIBRARY MEDIA	1,195,783.59	733,609.59	42,239.96	419,934.04
STUDENT ASSESSMENT	478,364.84	142,195.35	115,869.40	220,300.09
PROGRESS MONITORING	220,000.78	126,692.47	0.00	93,308.31
ELEM COMM ARTS	5,800.00	537.36	0.00	5,262.64
ELEM SOC STUDIES	25,250.00	372.80	0.00	24,877.20
ELEM MATH	2,000.00	1,445.34	0.00	554.66
ELEM SCIENCE	300.00	142.75	0.00	157.25
MIDD ELA	3,375.00	436.38	0.00	2,938.62
MIDD SOC STUDIES	500.00	223.12	0.00	276.88
MIDD MATH	5,000.00	3,016.38	0.00	1,983.62
MIDD SCIENCE	13,375.00	2,395.40	0.00	10,979.60
HIGH ELA	40,015.00	2,579.37	0.00	37,435.63
HIGH SOC STUDIES	1,950.00	300.00	0.00	1,650.00
HIGH MATH	1,350.00	2,450.15	0.00	-1,100.15
HIGH SCIENCE	2,100.00	2,162.25	175.00	-237.25
FINE ARTS	244,209.00	135,508.94	66,128.86	42,571.20
PHYSICAL EDUC	1,390.00	3,062.41	0.00	-1,672.41
GIFTED	29,800.00	23,866.91	0.00	5,933.09
ESOL	26,050.00	28,098.22	17,189.31	-19,237.53
WORLD LANGUAGE	12,980.00	7,044.82	0.00	5,935.18
CAREER & TECH ED	7,550.00	2,161.33	0.00	5,388.67
CHOICE	944,458.30	319,723.05	559,527.28	65,207.97
INSTRUCTIONAL TECHNOLOGY	12,000.00	2,323.46	0.00	9,676.54
PATH	145,208.67	81,154.35	1,600.00	62,454.32
OASIS PROGRAM	9,900.00	14,324.15	0.00	-4,424.15
OUTDOOR SCHOOL	18,150.00	92,829.01	131,791.50	-206,470.51
SUMMER SCHOOL	50,000.00	204,818.82	50,000.00	-204,818.82
VIRTUAL CAMPUS	2,401,970.06	1,082,423.66	0.00	1,319,546.40
CAMP FUNTASTIC	0.00	69,947.52	0.00	-69,947.52
BOARD OF EDUCATION	217,191.00	96,244.76	0.00	120,946.24

**Parkway School District
Consolidated Budget - Programs Recap Report**

Fiscal Year 2024 Through Period 8 Run Date: 03-18-2024 @ 13:21:41

	Budget	Expended	Encumbrances	Unexpended
SUPERINTENDENT	537,775.61	343,687.40	0.00	194,088.21
DISTRICT DUES	204,623.00	109,563.83	11,000.00	84,059.17
LEGAL SERVICES	200,000.00	94,568.70	34,151.00	71,280.30
DEPUTY SUPERINTENDENT	385,175.22	219,880.72	1,560.00	163,734.50
CHIEF FINANCIAL OFFICER	377,050.52	236,769.26	0.00	140,281.26
COMMUNICATIONS	1,180,504.42	688,909.92	78,675.16	412,919.34
SAFETY SECURITY	1,655,203.24	685,799.91	314,270.54	655,132.79
SPECIAL PROJECTS	610,873.67	88,669.84	16,015.00	506,188.83
FINANCE	1,363,433.44	886,344.34	1,375.00	475,714.10
INTERNAL EQUIP FIN	810,436.35	261,875.54	139,525.79	409,035.02
RISK MGMT	3,425,652.00	2,883,863.97	135,135.99	406,652.04
FOOD SERVICES	7,044,996.29	3,866,793.03	1,381,024.91	1,797,178.35
PURCHASING	352,233.69	206,284.32	0.00	145,949.37
PRINT SHOP	49,136.96	31,203.29	5,983.33	11,950.34
SCHOOL STORES	152,505.48	90,378.74	1,687.15	60,439.59
WAREHOUSE	593,809.26	381,027.75	9,413.26	203,368.25
MAILROOM	55,752.20	30,091.97	1,164.72	24,495.51
TECHNOLOGY	10,230,966.34	5,741,560.12	631,454.03	3,857,952.19
HUMAN RESOURCES	1,572,889.11	818,604.23	116,232.77	638,052.11
TRANSPORTATION	6,865,370.58	3,981,472.04	1,304,358.60	1,579,539.94
SSD TRANSPORTATION	2,030,631.41	1,301,675.91	0.00	728,955.50
CUSTODIAL	7,726,780.15	4,938,942.76	226,663.24	2,561,174.15
FACILITY MAINTENANCE	6,313,853.92	3,461,153.31	931,114.51	1,921,586.10
GROUNDS MAINTENANCE	2,130,042.73	1,036,275.14	295,547.10	798,220.49
PLANNING	1,717,514.08	1,169,284.56	138,801.62	409,427.90
ENVIRONMENTAL SVCS	824,539.70	425,633.91	360,058.17	38,847.62
FACILITY MANAGEMENT	985,444.42	443,356.86	117,195.36	424,892.20
REBATE PROJECTS	350,000.00	90,697.00	0.00	259,303.00
ENERGY SERVICES	4,541,000.00	2,778,269.60	836,639.89	926,090.51
SUSTAINABILITY	583,689.48	293,959.17	195,322.37	94,407.94
2018 BOND	6,906,435.00	4,558,556.39	124,473.11	2,223,405.50
2022 BOND	51,076,237.00	15,543,161.36	7,625,649.70	27,907,425.94
DEBT SERVICE	26,607,184.59	26,592,227.59	0.00	14,957.00
STATE GRANTS	273,591.49	217,489.08	119,000.00	-62,897.59
FEDERAL GRANTS	3,133,870.58	2,775,716.28	120,469.77	237,684.53
LOCAL GRANTS	324,165.81	94,928.67	48,733.75	180,503.39

Parkway School District Consolidated Budget - Programs Recap Report

Fiscal Year 2024 Through Period 8 Run Date: 03-18-2024 @ 13:21:41

	Budget	Expended	Encumbrances	Unexpended
Grand Total for Funds 10-12	100,721,998.23	55,380,321.10	7,782,673.26	37,559,003.87
Grand Total for Fund 20	167,095,500.00	95,869,237.10	0.00	71,226,262.90
Grand Total for Fund 30	26,607,184.59	26,592,227.59	0.00	14,957.00
Grand Total for Funds 40-41	5,467,407.00	1,470,299.43	1,936,586.81	32,191,352.20
Grand Total All	357,874,761.82	199,413,802.97	17,469,382.88	140,991,575.97

**Parkway School District
Building Budget Programs Recap Report**

Fiscal Year 2024 Through Period 8 Run Date: 03-18-2024 @ 13:22:57

	Budget	Expended	Encumbrances	Unexpended
SPECIAL READING	21,976.00	14,604.89	1,511.99	5,859.12
COMM ARTS	145,883.00	72,609.46	909.96	72,363.58
MATHEMATICS	63,268.00	26,768.66	1,607.85	34,891.49
FINE ARTS	142,629.00	94,283.06	10,959.14	37,386.80
PHYSICAL EDUCATION	70,736.97	37,088.22	3,469.76	30,178.99
SCIENCE	103,264.00	48,527.88	1,912.25	52,823.87
SOCIAL STUDIES	86,731.44	38,859.98	1,696.00	46,175.46
INSTRUCTIONAL TECHNOLOGY	73,499.00	35,828.81	1,094.00	36,576.19
GUIDANCE	28,942.19	12,601.02	0.00	16,341.17
ART	138,099.05	105,836.28	16,107.69	16,155.08
BLDG ADMIN SERVICES	2,106,954.93	1,122,013.61	50,247.07	934,694.25
AUDIO VISUAL SERVICES	1,300.00	233.50	0.00	1,066.50
BUSINESS EDUCATION	35,248.00	6,629.56	0.00	28,618.44
MODERN CLASSICAL LANG	40,094.00	16,739.14	0.00	23,354.86
FAMILY AND CONSUMER SC	76,436.00	45,511.67	5,927.00	24,997.33
INDUSTRIAL ARTS	46,948.00	30,452.57	11,890.77	4,604.66
STUDENT BODY ACT	116,253.00	61,660.57	12,225.00	42,367.43
COOP VOC ED	3,184.00	108.95	0.00	3,075.05
UNIFIED STUDIES	2,255.00	884.83	0.00	1,370.17
SPEECH	22,429.00	8,655.29	0.00	13,773.71
LIBRARY SVCS	82,794.00	38,247.18	4,687.89	39,858.93
HEALTH ED	7,693.00	2,698.87	0.00	4,994.13
EEE CAMP	3,675.00	9,645.37	15.00	-5,985.37
ESOL	3,770.00	1,102.30	0.00	2,667.70
GIFTED EDUCATION	9,704.00	4,145.28	29.04	5,529.68
SPECIAL SERVICES	300.00	158.14	0.00	141.86
Grand Total for Funds 10-12	3,305,447.58	1,693,704.18	97,662.52	1,514,080.88
Grand Total for Fund 20	0.00	20,203.24	0.00	-20,203.24
Grand Total for Fund 30	0.00	0.00	0.00	0.00
Grand Total for Funds 40-41	128,619.00	121,987.67	26,627.89	-19,996.56
Grand Total All	3,434,066.58	1,835,895.09	124,290.41	1,473,881.08

- **GLOSSARY**

ACCOUNTS PAYABLE - Unpaid amounts currently owed to vendors for goods and services provided.

ACCOUNTS RECEIVABLE - Revenues earned but not yet received by the District.

AMOUNT PROVIDED FOR BOND PRINCIPAL - Amount available to meet current and future bond payments.

AMOUNT TO BE PROVIDED FOR PRINCIPAL AND INTEREST - The amount of funds needed to repay remaining bonded indebtedness. This is a “memo type” entry and does not represent an actual accumulation of cash.

BONDS AND INTEREST PAYABLE - CURRENT - Amount of bond principal and interest payable in future years.

CONSTRUCTION IN PROGRESS - Amounts expended to date on construction projects not completed. When completed, this account is reduced by the total cost of the completed projects.

ENCUMBRANCES - Obligations in the form of purchase orders, contracts, salary commitments, etc. for which a budgeted appropriation has been made.

EQUITY IN GENERAL FIXED ASSETS - Represents the appropriation of funds over a number of years to acquire land, buildings / improvements, and equipment. It is an offset to the respective asset accounts.

FUND BALANCE - The excess of assets over liabilities, which represent the “net worth” of a fund.

FUNDS - The four basic funds and their purposes are:

Capital Projects (Building) - Only capital equipment and building additions / alterations can be charged to this fund. Primary sources of revenue are property / delinquent taxes, building leases, investment income and sale of bonds.

Debt Service - Bond principal, interest and fees associated with the issue and redemption of bonds are the only expenses chargeable to this fund. Primary sources of revenue are property / delinquent taxes and investment income.

General (Incidental) - Expenses not specifically chargeable to other funds are charged to this fund. Primary sources of revenue are property / delinquent taxes, sales tax, investment income, minimum guarantee, VST, textbook, transportation and food service.

Special Revenue (Teachers) - Only salaries for certificated personnel and the cost medical / dental / vision / life insurance can be charged to this fund. Primary sources of revenue are property / delinquent taxes, investment income, state utility tax, minimum guarantee and VST.

INVENTORIES - Value of consumables purchased for future use.

PREPAID EXPENSES - Services paid for in advance of use (e.g. insurance).

RESERVE - Portion of the fund balance which is segregated for a future use and, therefore, not available for future appropriation.

RESERVE FOR BUDGETED ENCUMBRANCE - Funds budgeted and encumbered but not yet spent.

RESTRICTED RESERVE - Balances in the General Fund or Capital Projects Fund restricted as to the use (e.g. future medical / dental benefits) or unspent bond issue funds.

UNREALIZED REVENUES - Revenues budgeted but not yet realized.

UNSPENT BUDGETED FUNDS - Funds budgeted but not expended or encumbered.



FOR THE MONTH OF: FEBRUARY FY24

Attached are lists (alphabetical by vendor) of purchase orders and orders for payment \$500 to \$15,000 and \$15,000 + which the administration has approved in accordance with Policy #DJE BP.

Reports per DIC.BP

c: Patty Bedborough, Dawne Trokey, Christy Groner, Angela Lawson

ORDER FOR PAYMENTS

\$500 - \$15,000

FEBRUARY FY24

VENDOR	VENDOR NAME	OBJECT	DOC. #	AMOUNT	WARRANT	CHECK #	INVOICE
700592	AMAZON	6411	550918	\$ 693.12		0	550918
700592	AMAZON	6411	550896	\$ 725.35		0	550896
700592	AMAZON	6412	551240	\$ 1,087.02		0	551240
300092	AT&T MOBILITY	6361	550180	\$ 1,836.97		0	834829586x122023
300092	AT&T MOBILITY	6361	550181	\$ 2,889.00		0	0826811811-122523
300092	AT&T MOBILITY	6361	550179	\$ 3,563.00		0	7246135807
7035	AXA EQUITABLE	2227	550335	\$ 8,267.50	EARLY	531556	022324 PR ROTH
7035	AXA EQUITABLE	2227	548661	\$ 8,467.50	EARLY	531277	020924 ROTHPR
636201	BIG SHOW PRODUCTIONS	6391	547382	\$ 600.00	EARLY	531150	17
703751	BOB ROGERS TRAVEL	6411	549194	\$ 500.00	EARLY	531560	YOUNGTRENT022024
625398	BOWLERO, AMF	6398	550641	\$ 1,196.36		0	550641
648817	CASUAL TEES	6411	550787	\$ 513.00	30724.00	10552	73801
648817	CASUAL TEES	6411	550770	\$ 517.25	30724	10552	73824
648817	CASUAL TEES	6411	550788	\$ 599.85	30724	10552	73823
648817	CASUAL TEES	6411	547298	\$ 694.00	20824	10451	73590
648817	CASUAL TEES	6411	550766	\$ 998.00	30724	10552	73518
641082	CHALLENGER LEARNING	6398	551374	\$ 575.00		0	7249-B
626562	CHAPMAN PROMOTIONS &	6411	551370	\$ 890.40		0	1705
625328	CHARACTERPLUS	6319	548290	\$ 750.00	21524	10478	1592
625328	CHARACTERPLUS	6319	549272	\$ 750.00	30724	10553	1591
300225	CHARTER COMMUNICATIO	6361	549525	\$ 1,511.00		0	1.15052E+14
300225	CHARTER COMMUNICATIO	6361	549526	\$ 3,200.00		0	1.73545E+14
626899	CHILDREN'S MIRACLE N	6398	547324	\$ 892.00	EARLY	531153	CHDM DONATE21024
622450	CHRIS CAKES OF ST.LO	6411	550753	\$ 3,391.00		0	1000069988
631821	COABE-COALITION ON A	6319	551292	\$ 650.00		0	551292
631821	COABE-COALITION ON A	6319	551293	\$ 650.00		0	551293
626852	CONCOURSE TEAM EXPRE	6411	550968	\$ 540.00	REG	531793	INV1020774
626852	CONCOURSE TEAM EXPRE	6411	550358	\$ 612.50	REG	531793	INV1041393
626852	CONCOURSE TEAM EXPRE	6411	547304	\$ 660.00	REG	531207	INV1034855
626852	CONCOURSE TEAM EXPRE	6411	547373	\$ 784.75	REG	531207	INV1035537
626852	CONCOURSE TEAM EXPRE	6411	549154	\$ 900.00	REG	531343	INV1038994
626852	CONCOURSE TEAM EXPRE	6411	547305	\$ 936.00	REG	531207	INV1034859
626489	CONVERGEONE, INC	6316	549342	\$ 562.50	REG	531520	PS249943
654099	CREST INDUSTRIES INC	6411	548622	\$ 741.66	21524	10481	2791936
626219	CREVE COEUR-OLIVETTE	6371	549224	\$ 530.00	30724.00	10555	7788
999997	DEFINE EDUCATION	6319	552754	\$ 3,000.00		0	552754
999997	EDUCATIONPLUS	6411	551227	\$ 531.96		0	551227
999997	EDUCATIONPLUS	6411	552756	\$ 625.34		0	552756
999997	EDUCATIONPLUS	6319	552885	\$ 820.00		0	552885
999997	EDUCATIONPLUS	6319	552886	\$ 820.00		0	552886
602836	ENGINEERED AIR	6411	547368	\$ 706.12	REG	531213	DS143343
636110	EZCATER, INC	6411	551315	\$ 699.68		0	551315
8070	FAMILY SUPPORT PAYME	2221	548654	\$ 1,821.39	EARLY	531289	020924 PAYROLL
8070	FAMILY SUPPORT PAYME	2221	550345	\$ 1,821.39	EARLY	531570	022324 PAYROLL
400360	FAST SIGNS OF CREVE	6332	550890	\$ 535.00		0	28-98856

VENDOR	VENDOR NAME	OBJECT	DOC. #	AMOUNT	WARRANT	CHECK #	INVOICE
400360	FAST SIGNS OF CREVE	6541	550890	\$ 1,346.40		0	28-98856
654343	FENTON SEW & VAC	6411	552765	\$ 1,149.95		0	552765
7040	FIDELITY RETIREMENT	2227	548662	\$ 8,213.40	EARLY	531290	020924 ROTHPR
7040	FIDELITY RETIREMENT	2227	550337	\$ 8,213.40	EARLY	531571	022324 PR ROTH
635602	FISHER SCIENCE EDUCA	6411	552759	\$ 963.64		0	552759
600150	FORD HOTEL & SUPPLY	6411	547365	\$ 798.95	REG	531362	1504345
600150	FORD HOTEL & SUPPLY	6411	547366	\$ 859.71	REG	531362	1504344
623671	FORT ZUMWALT SCHOOL	6391	547387	\$ 543.14	REG	531217	FZN JV/V BBALL 2024
602129	FRANCIS HOWELL SCHOO	6341	549344	\$ 526.00	REG	531642	INV-000703
630542	FRENCH GERLEMAN ELEC	6411	549296	\$ 662.82	21524	10485	11233550-00
626269	GREAT SKATE	6398	550707	\$ 1,328.00		0	84165
1601	GREGORY F.X. DALY	2211	550348	\$ 4,421.73	EARLY	531576	FEBRUARY 2024
809282	HEAVY DUTY EQUIPMENT	6411	550623	\$ 849.98		0	4869C
848234	KRUEGER POTTERY	6411	551055	\$ 646.00	REG	531839	143698
812622	KUTA SOFTWARE LLC	6412	551411	\$ 784.00		0	551411
8018	LEGALSHIELD	2265	550328	\$ 1,218.02	EARLY	531583	022324 PAYROLL
999994	LINDY SCHOENFELD	5122	550762	\$ 585.00	EARLY	531590	REFUND SCHOENFELD
848916	MAGIC HOUSE	6398	551376	\$ 693.00		0	551376
999994	MATTINGLY, KYLE	6341	551100	\$ 509.20	EARLY	531754	SIT MATTINGLY-FEB 24
301546	METROPOLITAN SEWER D	6335	551813	\$ 500.34		0	551813
301546	METROPOLITAN SEWER D	6335	551814	\$ 528.09		0	551814
301546	METROPOLITAN SEWER D	6335	551815	\$ 662.67		0	551815
301546	METROPOLITAN SEWER D	6335	551817	\$ 850.83		0	551817
301546	METROPOLITAN SEWER D	6335	551787	\$ 1,105.29		0	551787
301546	METROPOLITAN SEWER D	6335	551788	\$ 1,377.24		0	551788
301546	METROPOLITAN SEWER D	6335	551789	\$ 1,565.94		0	551789
301546	METROPOLITAN SEWER D	6335	551793	\$ 3,131.88		0	551793
301546	METROPOLITAN SEWER D	6335	551816	\$ 8,283.96		0	551816
301546	METROPOLITAN SEWER D	6335	551818	\$ 8,554.23		0	551818
1000	MISSOURI SAVING FOR	2241	548650	\$ 4,060.00	EARLY	531297	020924 PAYROLL
1000	MISSOURI SAVING FOR	2241	550326	\$ 4,060.00	EARLY	531587	022324 PAYROLL
626701	MOSYLE CORPORATION	6412	549557	\$ 2,393.00		0	2472530
834915	MSHSAA	6398	548719	\$ 537.00	EARLY	531298	24-W03277
810491	MUSIC FOR ALL	6391	551255	\$ 925.00		0	551255
999996	MUSO, PETE	6343	550834	\$ 684.97	REG	531859	022424 TRAVEL
802794	NASSP	6411	550730	\$ 703.50		0	550730
811582	NOVEL ELECTRONIC DES	6411	550161	\$ 689.95		0	22499
809084	OFFICE ESSENTIALS IN	6411	549568	\$ 507.67		0	WO-422485-1
809084	OFFICE ESSENTIALS IN	6411	552776	\$ 510.40		0	WO-418804-1
809084	OFFICE ESSENTIALS IN	6411	552779	\$ 510.40		0	WO-430772-1
809084	OFFICE ESSENTIALS IN	6411	551776	\$ 520.30		0	WO-430737-1
809084	OFFICE ESSENTIALS IN	6411	551775	\$ 556.80		0	WO-428871-1
809084	OFFICE ESSENTIALS IN	6411	549564	\$ 583.01		0	WO-419303-1
809084	OFFICE ESSENTIALS IN	6411	551773	\$ 649.60		0	WO-426323-1
809084	OFFICE ESSENTIALS IN	6411	551354	\$ 696.00		0	WO- 428849-1
809084	OFFICE ESSENTIALS IN	6411	552840	\$ 696.00		0	WO-432624-1
809084	OFFICE ESSENTIALS IN	6411	551349	\$ 709.98		0	WO-418766-1
809084	OFFICE ESSENTIALS IN	6411	550613	\$ 710.38		0	WO-431801-1
809084	OFFICE ESSENTIALS IN	6411	550155	\$ 763.67		0	WO-418763-1

VENDOR	VENDOR NAME	OBJECT	DOC. #	AMOUNT	WARRANT	CHECK #	INVOICE
809084	OFFICE ESSENTIALS IN	6411	552835	\$ 835.48		0	WO-419157-1
809084	OFFICE ESSENTIALS IN	6411	552863	\$ 928.00		0	WO-426506-1
809084	OFFICE ESSENTIALS IN	6411	552864	\$ 978.60		0	WO-426516-1
809084	OFFICE ESSENTIALS IN	6411	550184	\$ 1,067.80		0	WO-419020-1
809084	OFFICE ESSENTIALS IN	6411	549538	\$ 1,160.00		0	WO-418818-1
999994	OMEARA, ALISON	6341	547266	\$ 568.16	EARLY	531169	SIT BAUCHENS-JAN 24
999994	OMEARA, ALISON	6341	551106	\$ 1,136.32	EARLY	531755	SIT BAUCHENS-FEB 24
915024	PALEN MUSIC CENTER I	6332	548569	\$ 763.11	REG	531433	5247715
915024	PALEN MUSIC CENTER I	6332	548570	\$ 856.97	REG	531433	5247716
610	PANERA BREAD #600603	6411	552761	\$ 989.16		0	552761
6100	PNEA	2231	548651	\$ 8,302.58	EARLY	531306	020924 PAYROLL
6100	PNEA	2231	550327	\$ 8,367.10	EARLY	531596	022324 PAYROLL
934819	POSITIVE PROMOTIONS	6411	550697	\$ 642.56		0	550697
810486	PRIMARY SYSTEMS	6411	550966	\$ 978.61	REG	531694	26207
902248	RYDIN	6411	548737	\$ 688.92	21524	10498	PS-INV114637
999997	SP CAREERLEARNING	6319	551317	\$ 728.00		0	551317
999997	SP SHAR MUSIC	6411	551254	\$ 648.11		0	551254
999997	STLC- N. COUNTY GOV	6391	550182	\$ 2,150.61		0	550182
915817	THERMAL MECHANICS	6411	550961	\$ 545.26	REG	531720	128502
915817	THERMAL MECHANICS	6411	550964	\$ 725.00	REG	531720	129085
636203	THOMAS, VINCENT	6391	548635	\$ 600.00	EARLY	531311	67890
108082	TIEARNEY, JASON	1303	550764	\$ 5,600.00	EARLY	531600	ITALY CASH ADVANCE
912613	UNION MACHINERY	6332	549645	\$ 576.15	REG	531549	SC04236
622728	UNIVERSITY OF MISSOU	6319	550877	\$ 1,116.00		0	550877
7165	VALIC	2227	548659	\$ 3,236.28	EARLY	531314	020924 PAYROLL
7165	VALIC	2227	550332	\$ 3,236.28	EARLY	531605	022324 PAYROLL
300044	VERIZON WIRELESS	6361	549529	\$ 896.75		0	9953107034
300044	VERIZON WIRELESS	6361	549529	\$ 3,228.67		0	9953107034
7167	VRSCO	2227	550338	\$ 3,105.00	EARLY	531606	022324 PR ROTH
7167	VRSCO	2227	548663	\$ 3,115.00	EARLY	531315	020924 ROTHPR
906503	WAGNER PORTRAIT GROU	6411	549341	\$ 569.98	REG	531729	194614
108088	WARREN, DIANA	1303	549598	\$ 600.00	EARLY	531509	ICELAND ADVANCE
TOTAL:				\$ 205,336.51			

ORDER FOR PAYMENTS**\$15,000+****FEBRUARY FY24**

VENDOR	VENDOR NAME	OBJECT	DOC. #	AMOUNT	WARRANT	CHECK #	INVOICE
7035	AXA EQUITABLE	2227	550330	\$ 34,795.79	EARLY	531556	022324 PAYROLL
7035	AXA EQUITABLE	2227	548657	\$ 35,883.62	EARLY	531277	020924 PAYROLL
7040	FIDELITY RETIREMENT	2227	548658	\$ 46,907.07	EARLY	531290	020924 PAYROLL
7040	FIDELITY RETIREMENT	2227	550331	\$ 46,907.07	EARLY	531571	022324 PAYROLL
7167	VRSCO	2227	550333	\$ 16,240.81	EARLY	531606	022324 PAYROLL
7167	VRSCO	2227	548660	\$ 16,461.64	EARLY	531315	020924 PAYROLL
TOTAL:				\$ 197,196.00			

PURCHASE ORDERS

\$500 TO \$15,000

FEBRUARY FY 24

PO#	Vendor Name	PO Date	Order Amount	Balance	Status
54240094	AALCO MANUFACTURING COMPANY	02/12/2024	1,765.00	0.00	0 - Closed
11240010	ACCO BRANDS	02/05/2024	1,396.56	0.00	0 - Closed
85240319	ACCURATE ASPHALT PAVING CO.INC	02/27/2024	13,228.00	13,228.00	8 - Printed
36240037	ADVERTISING PREMIUM SALES INC	02/22/2024	1,026.72	1,026.72	8 - Printed
85240317	ALL TYPE VACUUM & JANITORIAL SUPPLY	02/26/2024	3,727.00	3,727.00	8 - Printed
76240012	AMERICAN ASSOCIATION OF SCHOOL ADMINISTRATORS, INC	02/05/2024	11,000.00	11,000.00	8 - Printed
63240193	AMERICAN DIGITAL SECURITY	02/15/2024	8,835.06	0.00	0 - Closed
58240101	AMERICAN LEGION AUXILIARY DEPARTMENT OF MISSOURI	02/15/2024	1,000.00	0.00	0 - Closed
45240035	ANDRE'S BANQUET FACILITIES	02/05/2024	2,469.15	2,469.15	8 - Printed
32240008	ARCHIE SUPPLY LLC	02/26/2024	4,493.50	4,493.50	8 - Printed
56240136	ARLINGTON POWER EQUIPMENT, INC.	02/26/2024	1,299.00	1,299.00	8 - Printed
32240006	ASCEND LEARNING HOLDINGS, LLC	02/12/2024	1,335.62	0.00	0 - Closed
62240255	AVANT ASSESSMENT	02/14/2024	2,678.80	0.00	0 - Closed
85240299	BAUMAN OIL DISTRIBUTORS, INC.	02/05/2024	8,667.43	0.00	0 - Closed
85240316	BAUMAN OIL DISTRIBUTORS, INC.	02/22/2024	12,786.88	0.00	0 - Closed
85240314	BENTLEY SYSTEMS INC	02/21/2024	5,560.00	0.00	0 - Closed
8240029	BLICK ART MATERIALS	02/05/2024	686.69	0.00	0 - Closed
56240128	BLICK ART MATERIALS	02/08/2024	871.11	80.05	8 - Printed
58240090	BLICK ART MATERIALS	02/05/2024	1,252.80	155.88	8 - Printed
36240038	BOB ROGERS TRAVEL	02/26/2024	1,500.00	0.00	0 - Closed
45240038	BOB ROGERS TRAVEL	02/17/2024	4,845.90	0.00	0 - Closed
69240012	BOLD PRIVATE INVESTIGATORS	02/27/2024	10,000.00	8,576.00	8 - Printed
54240106	BRICK WALL INC.	02/29/2024	1,500.00	1,500.00	8 - Printed
56240123	CAROLINA BIOLOGICAL SUPPLY	02/05/2024	1,063.44	189.27	8 - Printed
36240036	CARROLLTON SPECIALTY PRODUCTS COMPANY	02/22/2024	1,612.50	1,612.50	8 - Printed
56240124	CASUAL TEES	02/05/2024	521.80	0.00	0 - Closed
56240137	CASUAL TEES	02/26/2024	556.00	0.00	0 - Closed
40240037	CASUAL TEES	02/26/2024	945.00	945.00	8 - Printed
50240079	CASUAL TEES	02/29/2024	1,029.00	1,029.00	8 - Printed
40240036	CASUAL TEES	02/26/2024	1,225.00	1,225.00	8 - Printed
54240082	CASUAL TEES	02/05/2024	1,236.00	0.00	0 - Closed
58240095	CASUAL TEES	02/12/2024	1,349.00	0.00	0 - Closed
58240096	CASUAL TEES	02/15/2024	1,385.75	0.00	0 - Closed
65240012	CASUAL TEES	02/05/2024	1,572.50	0.00	0 - Closed
50240076	CASUAL TEES	02/26/2024	1,593.75	0.00	0 - Closed
45240034	CASUAL TEES	02/05/2024	4,557.00	0.00	0 - Closed
50240071	CAVALIER COACHES, INC.	02/08/2024	3,300.00	0.00	0 - Closed
85240325	CLEAN CARTON CO INC	02/29/2024	1,522.20	0.00	0 - Closed
54240092	COMPLETE MUSIC INC	02/09/2024	8,360.00	6,760.00	8 - Printed
56240141	CONCOURSE TEAM EXPRESS LLC	02/29/2024	758.00	758.00	8 - Printed
54240088	CONCOURSE TEAM EXPRESS LLC	02/08/2024	990.00	990.00	8 - Printed
54240100	CONCOURSE TEAM EXPRESS LLC	02/26/2024	1,000.00	1,000.00	8 - Printed
54240084	CONCOURSE TEAM EXPRESS LLC	02/06/2024	1,150.00	1,150.00	8 - Printed
58240091	CONCOURSE TEAM EXPRESS LLC	02/06/2024	1,248.00	1,248.00	8 - Printed
54240104	CONCOURSE TEAM EXPRESS LLC	02/26/2024	2,000.00	2,000.00	8 - Printed

PO#	Vendor Name	PO Date	Order Amount	Balance	Status
54240101	CONCOURSE TEAM EXPRESS LLC	02/26/2024	2,430.50	2,430.50	8 - Printed
54240081	CONCOURSE TEAM EXPRESS LLC	02/05/2024	2,970.00	2,970.00	8 - Printed
54240083	CONCOURSE TEAM EXPRESS LLC	02/06/2024	2,970.00	2,970.00	8 - Printed
54240080	CONCOURSE TEAM EXPRESS LLC	02/05/2024	4,898.40	4,898.40	8 - Printed
85240303	CONSOLIDATED ELECTRICAL DISTRIBUTORS, INC	02/06/2024	1,275.63	0.00	0 - Closed
85240302	CONSOLIDATED ELECTRICAL DISTRIBUTORS, INC	02/06/2024	1,885.12	0.00	0 - Closed
50240074	DASA-DISABLED ATHLETE SPORTS ASSOCIATION	02/15/2024	1,891.00	0.00	0 - Closed
58240104	DBQ COMPANY	02/26/2024	1,696.00	1,696.00	8 - Printed
56240122	DELA AWADZI	02/05/2024	700.00	0.00	0 - Closed
63240201	DELL MARKETING EDUCATIONAL SALES	02/28/2024	501.00	0.00	0 - Closed
63240203	DELL MARKETING EDUCATIONAL SALES	02/29/2024	750.00	750.00	8 - Printed
63240200	DELL MARKETING EDUCATIONAL SALES	02/28/2024	900.00	0.00	0 - Closed
63240195	DELL MARKETING EDUCATIONAL SALES	02/17/2024	925.00	0.00	0 - Closed
63240190	DELL MARKETING EDUCATIONAL SALES	02/14/2024	1,964.00	0.00	0 - Closed
63240185	DELL MARKETING EDUCATIONAL SALES	02/02/2024	3,834.59	0.00	0 - Closed
63240192	DELL MARKETING EDUCATIONAL SALES	02/15/2024	4,860.00	0.00	0 - Closed
63240194	DELL MARKETING EDUCATIONAL SALES	02/17/2024	7,036.00	0.00	0 - Closed
20240007	DEMCO INC	02/29/2024	1,488.10	1,488.10	8 - Printed
85240324	DJM ECOLOGICAL SERVICES	02/28/2024	11,900.00	11,900.00	8 - Printed
58240105	EDUCATIONPLUS	02/26/2024	1,000.00	0.00	8 - Printed
36240034	EDUCATIONPLUS	02/22/2024	4,000.00	0.00	0 - Closed
74240055	EDUCATIONPLUS	02/09/2024	14,000.00	0.00	0 - Closed
89240037	EZCATER, INC	02/07/2024	1,353.77	0.00	0 - Closed
45240036	F INN OF BRANSON OPCO, LLC	02/05/2024	3,360.00	3,360.00	8 - Printed
86240116	F J JURCIC CO	02/06/2024	12,859.59	12,859.59	8 - Printed
41240017	FIRST EVANGELICAL FREE CHURCH	02/15/2024	1,252.00	0.00	0 - Closed
58240094	FLINN SCIENTIFIC INC	02/12/2024	1,279.80	0.00	0 - Closed
83240104	FOLLETT SCHOOL SOLUTIONS, INC	02/28/2024	687.89	687.89	8 - Printed
83240096	FOLLETT SCHOOL SOLUTIONS, INC	02/14/2024	829.72	829.72	8 - Printed
83240098	FOLLETT SCHOOL SOLUTIONS, INC	02/14/2024	947.96	947.96	8 - Printed
83240094	FOLLETT SCHOOL SOLUTIONS, INC	02/14/2024	949.94	949.94	8 - Printed
83240101	FOLLETT SCHOOL SOLUTIONS, INC	02/14/2024	982.07	982.07	8 - Printed
83240102	FOLLETT SCHOOL SOLUTIONS, INC	02/15/2024	992.43	992.43	8 - Printed
83240087	FOLLETT SCHOOL SOLUTIONS, INC	02/07/2024	994.43	181.10	8 - Printed
83240091	FOLLETT SCHOOL SOLUTIONS, INC	02/08/2024	1,018.69	1,018.69	8 - Printed
83240086	FOLLETT SCHOOL SOLUTIONS, INC	02/07/2024	1,172.35	57.15	8 - Printed
83240088	FOLLETT SCHOOL SOLUTIONS, INC	02/07/2024	1,249.82	0.00	0 - Closed
83240105	FOLLETT SCHOOL SOLUTIONS, INC	02/28/2024	1,318.74	1,318.74	8 - Printed
83240100	FOLLETT SCHOOL SOLUTIONS, INC	02/14/2024	1,814.52	1,814.52	8 - Printed
83240089	FOLLETT SCHOOL SOLUTIONS, INC	02/08/2024	1,895.74	1,895.74	8 - Printed
83240095	FOLLETT SCHOOL SOLUTIONS, INC	02/14/2024	1,938.05	1,938.05	8 - Printed
83240099	FOLLETT SCHOOL SOLUTIONS, INC	02/14/2024	2,351.11	2,351.11	8 - Printed
83240090	FOLLETT SCHOOL SOLUTIONS, INC	02/08/2024	3,390.86	3,390.86	8 - Printed
83240097	FOLLETT SCHOOL SOLUTIONS, INC	02/14/2024	4,395.04	4,395.04	8 - Printed
36240031	FORT ZUMWALT SCHOOL DISTRICT	02/12/2024	1,630.35	0.00	0 - Closed
36240035	FRANCIS HOWELL SCHOOL DISTRICT	02/22/2024	1,641.75	0.00	0 - Closed
9240009	GAME WORLD EVENT SERVICES, LLC.	02/26/2024	2,339.00	0.00	0 - Closed
56240138	GAMESTRAT INC.	02/26/2024	1,400.00	1,400.00	8 - Printed
43240019	GATEWAY REGION YOUNG MEN'S CHRISTIAN ASSOCIATION	02/08/2024	3,000.00	1,500.00	8 - Printed

PO#	Vendor Name	PO Date	Order Amount	Balance	Status
86240121	GEOTECHNOLOGY, INC	02/29/2024	4,800.00	4,800.00	8 - Printed
2240035	GOPHER SPORT	02/26/2024	2,104.83	2,104.83	8 - Printed
50240078	GOPHER SPORT	02/27/2024	3,469.76	3,469.76	8 - Printed
62240251	GUITAR CENTER STORES INC	02/07/2024	2,163.43	2,163.43	8 - Printed
85240295	HAGERMAN & COMPANY, INC.	02/02/2024	2,304.25	0.00	0 - Closed
58240098	HERRMANN, GRACE	02/15/2024	1,000.00	0.00	0 - Closed
41240016	HIGH RIDGE SEWING CTR INC.	02/05/2024	1,006.48	0.00	0 - Closed
85240298	IMPERIAL BAG & PAPER CO LLC	02/05/2024	13,000.00	13,000.00	8 - Printed
13240003	INDOFF, LLC	02/15/2024	3,021.00	0.00	0 - Closed
50240080	INNOVATIVE HEIGHTS CHESTERFIELD LLC	02/29/2024	3,298.00	3,298.00	8 - Printed
86240118	INTEGRATED FACILITY SERVICES	02/21/2024	1,064.00	1,064.00	8 - Printed
86240119	INTEGRATED FACILITY SERVICES	02/26/2024	1,064.00	1,064.00	8 - Printed
85240306	INTERSTATE RESTORATION, LLC	02/12/2024	5,480.46	5,480.46	8 - Printed
85240297	INTERSTATE RESTORATION, LLC	02/02/2024	6,735.60	6,735.60	8 - Printed
85240304	INTERSTATE RESTORATION, LLC	02/08/2024	8,680.65	8,680.65	8 - Printed
74240057	JBF THERAPY & COACHING, LLC	02/14/2024	1,850.00	0.00	0 - Closed
54240093	JEFFCO TRAVEL SERVICE	02/12/2024	1,824.00	0.00	0 - Closed
54240089	JOSTENS INC	02/08/2024	1,163.20	1,163.20	8 - Printed
54240099	KAP7 INTERNATIONAL, INC.	02/26/2024	2,773.00	2,773.00	8 - Printed
62240256	KB2, LLC	02/26/2024	1,760.54	1,760.54	8 - Printed
54240086	KUTA SOFTWARE LLC	02/08/2024	784.00	0.00	0 - Closed
89240038	LAKESHORE LEARNING MATERIALS	02/14/2024	1,087.75	0.00	0 - Closed
97240062	LEE HELMS INC	02/07/2024	6,000.00	3,804.45	8 - Printed
56240127	LIBRARY STORE, INC	02/05/2024	960.69	0.00	0 - Closed
9240008	LITERATI, INC.	02/05/2024	2,020.23	2,020.23	8 - Printed
62240258	LOGIC SYSTEMS SOUND & LIGHTING	02/28/2024	4,592.00	4,592.00	8 - Printed
56240140	LOGO DADDY GRAPHICS LLC	02/29/2024	1,250.00	1,250.00	8 - Printed
54240095	LOGO DADDY GRAPHICS LLC	02/15/2024	2,500.00	2,500.00	8 - Printed
54240098	LYLE RAKERS CHARITABLE FOUNDATION	02/26/2024	3,754.39	0.00	0 - Closed
92240007	MAACCE-MISSOURI ASSOCIATION FOR ADULT CONTINUING &	02/15/2024	1,675.00	1,675.00	8 - Printed
45240040	MAIN EVENT ENTERTAINMENT, INC	02/26/2024	1,094.28	1,094.28	8 - Printed
43240020	MAIN EVENT ENTERTAINMENT, INC	02/15/2024	1,336.65	1,336.65	8 - Printed
40240038	MAIN EVENT ENTERTAINMENT, INC	02/29/2024	1,895.25	1,895.25	8 - Printed
40240035	MARCUS THEATRES	02/26/2024	2,497.50	2,497.50	8 - Printed
32240007	MARELLY LEASING LLC	02/15/2024	8,138.60	0.00	0 - Closed
58240106	MARTIN, ANDREA	02/26/2024	2,000.00	0.00	0 - Closed
85240307	MERLO PLUMBING INC	02/14/2024	2,415.23	0.00	0 - Closed
85240308	MERLO PLUMBING INC	02/14/2024	2,499.71	0.00	0 - Closed
56240131	METRO ENTERTAINMENT GROUP LLC	02/08/2024	1,800.00	0.00	0 - Closed
58240103	METRO ENTERTAINMENT GROUP LLC	02/26/2024	1,800.00	0.00	0 - Closed
85240321	MILFORD SUPPLY COMPANY INC	02/28/2024	3,000.00	3,000.00	8 - Printed
58240100	MISSOURI DECA	02/15/2024	3,715.00	0.00	0 - Closed
54240103	MISSOURI DECA	02/26/2024	3,860.00	0.00	0 - Closed
85240315	MOTOR CONTROL SPECIALTIES INC	02/21/2024	1,500.00	1,500.00	8 - Printed
62240250	MSA MUSIC INC	02/07/2024	7,224.00	7,224.00	8 - Printed
62240254	MSA MUSIC INC	02/08/2024	7,740.00	7,740.00	8 - Printed
40240032	MUSIC IN THE PARKS	02/08/2024	5,365.00	5,365.00	8 - Printed
40240029	MUSIC IN THE PARKS	02/05/2024	6,290.00	6,290.00	8 - Printed
71240017	MYBRANDPROMO INC	02/21/2024	1,230.02	0.00	0 - Closed

PO#	Vendor Name	PO Date	Order Amount	Balance	Status
56240135	NOTTELMANN MUSIC CO	02/26/2024	2,000.00	1,868.00	8 - Printed
54240105	OBERBACK, JEREMY JACOB	02/26/2024	1,100.00	0.00	0 - Closed
56240143	OFFICE ESSENTIALS INCORPORATED	02/29/2024	2,044.39	2,044.39	8 - Printed
54240085	OFFICE ESSENTIALS INCORPORATED	02/08/2024	2,210.30	2,210.30	8 - Printed
11240009	OFFICE ESSENTIALS INCORPORATED	02/05/2024	2,503.36	0.00	0 - Closed
58240107	OZARK PIZZA COMPANY LLC - PCARD ONLY	02/27/2024	1,738.25	1,738.25	8 - Printed
56240134	PASTA HOUSE CATERING	02/17/2024	1,285.00	1,285.00	8 - Printed
85240305	PROFESSIONAL SERVICE INDUSTRIES	02/12/2024	3,521.00	3,521.00	8 - Printed
85240301	PROFESSIONAL SERVICE INDUSTRIES	02/05/2024	11,286.00	11,286.00	8 - Printed
50240073	RIDDELL ALL AMERICAN	02/12/2024	5,000.00	5,000.00	8 - Printed
54240096	RIDDELL ALL AMERICAN	02/15/2024	5,000.00	5,000.00	8 - Printed
56240130	RIDDELL ALL AMERICAN	02/08/2024	5,000.00	0.00	0 - Closed
58240099	RIDDELL ALL AMERICAN	02/15/2024	6,997.45	6,997.45	8 - Printed
58240093	RL MUELLER NATIONAL DISTRIBUTORS INC	02/08/2024	3,499.00	2,587.70	8 - Printed
63240189	ROTH, WILLIAM J.	02/08/2024	11,500.00	11,500.00	8 - Printed
40240031	SABRINA CASSIDY	02/05/2024	1,791.10	1,791.10	8 - Printed
97240061	SAFETY-KLEEN SYSTEMS	02/06/2024	3,000.00	1,804.74	8 - Printed
54240090	SAM'S CLUB DIRECT - PCARD ONLY	02/08/2024	1,649.40	1,649.40	8 - Printed
63240186	SCHOOLINKS, INC	02/02/2024	2,500.00	2,500.00	8 - Printed
85240322	SCHULTE, MICHAEL	02/28/2024	1,786.43	1,786.43	8 - Printed
56240142	SHERATON WEST PORT INN	02/29/2024	1,000.00	1,000.00	8 - Printed
56240126	SHOW ME WEIGHTS	02/05/2024	3,265.00	3,265.00	8 - Printed
40240033	SIX FLAGS	02/08/2024	5,573.25	5,573.25	8 - Printed
46240018	SIX FLAGS	02/05/2024	12,628.23	12,628.23	8 - Printed
84240003	SPECIAL SCHOOL DIST. OF ST. LOUIS COUNTY	02/14/2024	10,118.58	0.00	0 - Closed
85240296	SPRAY SERVICES, INC.	02/02/2024	1,900.00	1,900.00	8 - Printed
17240004	ST. LOUIS CARDINALS -GROUP SALES	02/26/2024	1,285.00	0.00	0 - Closed
54240102	ST. LOUIS CARDINALS -GROUP SALES	02/26/2024	2,325.00	2,325.00	8 - Printed
40240039	ST. LOUIS CARDINALS -GROUP SALES	02/29/2024	2,918.00	2,918.00	8 - Printed
40240030	ST. LOUIS CARDINALS -GROUP SALES	02/05/2024	5,400.00	5,400.00	8 - Printed
5240012	ST. LOUIS CARDINALS -GROUP SALES	02/05/2024	5,700.00	5,700.00	8 - Printed
19240007	ST. LOUIS CARDINALS -GROUP SALES	02/15/2024	5,700.00	5,700.00	8 - Printed
1240019	ST. LOUIS CARDINALS -GROUP SALES	02/15/2024	8,000.00	8,000.00	8 - Printed
56240129	ST. LOUIS CNTY PARKS- CLAYTON	02/08/2024	528.00	528.00	8 - Printed
56240125	STORY FIRST, INC.	02/05/2024	2,649.55	2,649.55	8 - Printed
86240113	TARKETT USA INC.	02/06/2024	10,789.10	10,789.10	8 - Printed
46240019	TED DREWES, INC	02/15/2024	1,255.00	0.00	0 - Closed
10240028	TENNESSEE THEATRE COMPANY	02/05/2024	747.00	0.00	0 - Closed
2240033	TENNESSEE THEATRE COMPANY	02/05/2024	972.00	0.00	0 - Closed
45240039	THE HOME DEPOT #3018-PCARD USE ONLY	02/26/2024	1,658.20	1,658.20	8 - Printed
62240253	TOP NOTCH VIOLINS	02/07/2024	800.00	800.00	8 - Printed
62240249	TOP NOTCH VIOLINS	02/07/2024	2,160.00	0.00	0 - Closed
1240020	ULINE SHIPPING SUPPLIES	02/29/2024	1,746.20	1,746.20	8 - Printed
65240013	UNIV. OF MISSOURI	02/05/2024	2,000.00	2,000.00	8 - Printed
54240097	USA TOURS, INC.	02/26/2024	3,950.00	0.00	0 - Closed
40240034	VANDALIA BUS LINES, INC	02/12/2024	3,370.00	3,370.00	8 - Printed
54240087	VARSITY ATHLETIC APPAREL, INC.	02/08/2024	987.70	987.70	8 - Printed
50240075	VIRCO MFG CORP	02/26/2024	3,448.56	3,448.56	8 - Printed
36240033	VOLUNTARY INTERDISTRICT CHOICE	02/17/2024	1,181.42	1,181.42	8 - Printed

PO#	Vendor Name	PO Date	Order Amount	Balance	Status
86240115	W. SCHILLER & CO., INC.	02/06/2024	999.00	0.00	0 - Closed
63240187	W. SCHILLER & CO., INC.	02/02/2024	3,106.80	3,106.80	8 - Printed
58240092	W.C & D ENTERPRISES	02/08/2024	740.00	740.00	8 - Printed
69240011	WAYNESVILLE R-VI SCHOOL DISTRICT	02/26/2024	5,322.78	0.00	0 - Closed
58240097	WEINHARDT PARTY RENTAL, INC.	02/15/2024	1,570.00	1,570.00	8 - Printed
45240037	WEISSMAN'S THEATRICAL SUPPLIES, INC.	02/05/2024	1,953.72	1,953.72	8 - Printed
82240007	WEISSMAN'S THEATRICAL SUPPLIES, INC.	02/06/2024	2,191.13	0.00	0 - Closed
36240032	WENTZVILLE RV SCHOOL DISTRICT	02/12/2024	1,769.92	0.00	0 - Closed
23240018	WINDSTAR LINES, INC.	02/26/2024	3,845.00	3,845.00	8 - Printed
63240191	YELLOW FOLDER LLC	02/14/2024	\$ 14,700.00	0.00	0 - Closed
TOTAL:			\$ 646,075.44		

PURCHASE ORDERS

\$15,000+

FEBRUARY FY24

PO#	Vendor Name	PO Date	Order Amount	Balance	Status
60240014	ARTHUR J. GALLAGHER & CO.	02/06/2024	120,050.54	0.00	0 - Closed
97240060	BAUMAN OIL DISTRIBUTORS, INC.	02/06/2024	18,928.80	0.00	0 - Closed
75240035	BCTN HOLDINGS, INC.	02/05/2024	56,000.00	40,029.66	8 - Printed
56240132	BOB ROGERS TRAVEL	02/09/2024	15,000.00	9,598.08	8 - Printed
85240323	DAVIS EQUIPMENT CORPORATION	02/28/2024	64,500.00	64,500.00	8 - Printed
48240026	DH PACE COMPANY	02/05/2024	39,954.78	39,954.78	8 - Printed
86240112	DH PACE COMPANY	02/05/2024	49,628.00	49,628.00	8 - Printed
85240313	DJM ECOLOGICAL SERVICES	02/21/2024	21,310.00	21,310.00	8 - Printed
97240063	ENERGY PETROLEUM COMPANY	02/20/2024	22,322.55	0.00	0 - Closed
74240054	EQUAL OPPORTUNITY SCHOOLS	02/08/2024	29,600.00	0.00	0 - Closed
71240018	GRANT'S FARM, LLC	02/27/2024	40,632.00	40,632.00	8 - Printed
39240040	INTERSTATE RESTORATION, LLC	02/29/2024	17,384.11	17,384.11	8 - Printed
39240039	INTERSTATE RESTORATION, LLC	02/28/2024	39,120.36	39,120.36	8 - Printed
85240320	INTERSTATE RESTORATION, LLC	02/27/2024	60,000.00	60,000.00	8 - Printed
50240077	JEFFCO TRAVEL SERVICE	02/27/2024	20,236.00	0.00	0 - Closed
81240008	KAEMMERLEN PARTS & SERVICE, INC.	02/05/2024	50,000.00	44,182.07	8 - Printed
85240309	MERLO PLUMBING INC	02/14/2024	80,000.00	72,952.37	8 - Printed
85240310	MILFORD SUPPLY COMPANY INC	02/15/2024	25,000.00	20,191.93	8 - Printed
63240198	MMI-CPR SCHOOL TECH REPAIR, LLC	02/27/2024	62,262.50	62,262.50	8 - Printed
36240039	MV LEARNING, LLC	02/28/2024	23,153.60	0.00	0 - Closed
62240259	OFFICE ESSENTIALS INCORPORATED	02/28/2024	17,495.57	17,495.57	8 - Printed
85240300	O'HARA OUTDOORS, INC.	02/05/2024	25,000.00	21,654.00	8 - Printed
63240197	RAPTOR TECHNOLOGIES, LLC	02/26/2024	33,920.00	0.00	0 - Closed
73240023	RIDDELL ALL AMERICAN	02/05/2024	20,000.00	3,291.17	8 - Printed
86240114	ROTH, WILLIAM J.	02/06/2024	21,950.00	21,950.00	8 - Printed
86240120	ROTH, WILLIAM J.	02/27/2024	238,957.00	238,957.00	8 - Printed
54240091	ST. LOUIS CARDINALS -GROUP SALES	02/08/2024	16,416.00	16,416.00	8 - Printed
50240072	ST. LOUIS CARDINALS -GROUP SALES	02/08/2024	21,600.00	21,600.00	8 - Printed
76240013	ST. LOUIS COUNTY ELECTION BOARD	02/28/2024	82,499.96	0.00	0 - Closed
63240199	STAPLES	02/27/2024	1,591,667.50	1,591,667.50	8 - Printed
85240311	SUPERIOR INDUSTRIAL COATINGS	02/21/2024	44,350.00	0.00	0 - Closed
85240312	SUPERIOR INDUSTRIAL COATINGS	02/21/2024	47,550.00	0.00	0 - Closed
85240318	SUPERIOR INDUSTRIAL COATINGS	02/27/2024	48,650.00	0.00	0 - Closed
39240038	VEOLIA NORTH AMERICA, INC	02/08/2024	22,080.00	22,080.00	8 - Printed
86240117	WARNER COMMUNICATIONS	02/14/2024	26,250.00	26,250.00	8 - Printed
58240102	WORLDWIDE PERFORMANCE GROUP, LLC	02/22/2024	79,467.00	3,945.00	8 - Printed
62240257	ZANER-BLOSER, INC.	02/28/2024	\$ 33,542.85	33,542.85	8 - Printed
TOTAL:			\$ 3,226,479.12		

SPOT MARKET REPORT - FEBRUARY FY24

PO #	Create Date	Vendor	Name	COM	Qty.	UOM	UNIT \$	Description	Object	Account	Amt
07/01/23 - 07/31/23			Office Essentials	202	47	CASES	\$ 43.90	Regular Copy Paper			\$ 2,063.30
07/01/23 - 07/31/23			Office Essentials	202	65	CASES	\$ 45.90	30% Recycled copy paper			\$ 2,983.50
08/01/23 - 08/31/23			Office Essentials	202	207	CASES	\$ 43.90	Regular Copy Paper			\$ 9,087.30
08/01/23 - 08/31/23			Office Essentials	202	372	CASES	\$ 46.90	30% Recycled copy paper			\$ 17,446.80
09/01/23 - 09/30/23			Office Essentials	202	153	CASES	\$ 43.90	Regular Copy Paper			\$ 6,716.70
09/01/23 - 09/30/23			Office Essentials	202	310	CASES	\$ 46.90	30% Recycled copy paper			\$ 14,539.00
10/01/23 - 10/30/23			Office Essentials	202	90	CASES	\$ 43.90	Regular Copy Paper			\$ 3,951.00
10/01/23 - 10/30/24			Office Essentials	202	430	CASES	\$ 46.40	30% Recycled copy paper			\$ 19,952.00
11/01/23 - 11/30/23			Office Essentials	202	62	CASES	\$ 43.90	Regular Copy Paper			\$ 2,721.80
11/01/23 - 11/30/24			Office Essentials	203	426	CASES	\$ 43.90	30% Recycled copy paper			\$ 18,701.40
12/01/23 - 12/31/23			Office Essentials	203	278	CASES	\$ 43.90	30% Recycled copy paper			\$ 12,204.20
01/01/24 - 01/31/24			Office Essentials	203	497	CASES	\$ 43.90	30% Recycled copy paper			\$ 21,818.30
02/01/24 - 02/29/24			Office Essentials	203	374	CASES	\$ 46.40	30% Recycled copy paper			\$ 17,353.60
85240108	07/19/2023	636108	BAUMAN OIL DISTRIBUTORS, INC.	400	400	EACH	\$ 2.60	REGULAR RFG GASOLINE	6486	\$	1,039.80
85240108					1	EACH	\$ 102.46	FEDERAL AND STATE TAXES AND FEES	6486	\$	102.46
85240109	07/19/2023	636108	BAUMAN OIL DISTRIBUTORS, INC.	400	2000	EACH	\$ 2.60	REGULAR RFG GASOLINE	6486	\$	5,199.00
85240109					1	EACH	\$ 512.27	FEDERAL AND STATE TAXES AND FEES	6486	\$	512.27
85240122	07/31/2023	910351	SIEVEKING, INCORPORATED	400	421	EACH	\$ 2.86	NO LEAD 87 OCTANE	6486	\$	1,203.64
85240122					1	EACH	\$ 111.92	FEDERAL AND STATE TAXES AND FEES	6486	\$	111.92
85240122					267	EACH	\$ 2.50	UL SULFUR HI-WAY DIESEL	6486	\$	667.23
85240122					1	EACH	\$ 66.67	FEDERAL AND STATE TAXES AND FEES	6486	\$	66.67
85240122					1214.9	EACH	\$ 2.86	NO LEAD 87 OCTANE	6486	\$	3,473.40
85240122					1	EACH	\$ 310.16	FEDERAL AND STATE TAXES AND FEES	6486	\$	310.16
85240139	08/15/2023	642477	ENERGY PETROLEUM COMPANY	400	2646.6	EACH	\$ 2.85	REGULAR RFG GASONLINE	6486	\$	7,542.81
85240139					1	EACH	\$ 677.93	FEDERAL AND STATE TAXES AND FEES	6486	\$	677.93
85240139					356.9	EACH	\$ 2.85	REGULAR RFG GASOLINE	6486	\$	1,017.17
85240139					1	EACH	\$ 91.43	FEDERAL AND STATE TAXES AND FEES	6486	\$	91.43
85240184	09/24/2023	800559	KIESEL COMPANY	400	3958	EACH	\$ 2.79	NO LEAD 87 OCT RFG	6486	\$	11,042.82
85240184					1	EACH	\$ 1,016.05	FEDERAL AND STATE TAXES AND FEES	6486	\$	1,016.05
85240184					350.7	EACH	\$ 2.79	NO LEAD 87 OCT RFG	6486	\$	978.45
85240184					1	EACH	\$ 156.26	FEDERAL AND STATE TAXES AND FEES	6486	\$	156.26
85240184					293.8	EACH	\$ 3.85	UL SULFUR DIESEL	6486	\$	1,131.13
85240184					1	EACH	\$ 77.69	FEDERAL AND STATE TAXES AND FEES	6486	\$	77.69
85240186	09/25/2023	642477	ENERGY PETROLEUM COMPANY	400	400	EACH	\$ 2.85	REGULAR RFG GASONLINE	6486	\$	1,140.16
85240186					1	EACH	\$ 100.65	FEDERAL AND STATE TAXES AND FEES	6486	\$	100.65
85240186					801.2	EACH	\$ 2.85	REGULAR RFG GASONLINE	6486	\$	2,283.74
85240186					1	EACH	\$ 201.60	FEDERAL AND STATE TAXES AND FEES	6486	\$	201.60
85240184	09/24/2023	800559	KIESEL COMPANY	400	3958	EACH	\$ 2.79	NO LEAD 87 OCT RFG	6486	\$	11,042.82
85240184					1	EACH	\$ 1,016.05	FEDERAL AND STATE TAXES AND FEES	6486	\$	1,016.05
85240184					350.7	EACH	\$ 2.79	NO LEAD 87 OCT RFG	6486	\$	978.45
85240184					1	EACH	\$ 156.26	FEDERAL AND STATE TAXES AND FEES	6486	\$	156.26
85240184					293.8	EACH	\$ 3.85	UL SULFUR DIESEL	6486	\$	1,131.13
85240184					1	EACH	\$ 77.69	FEDERAL AND STATE TAXES AND FEES	6486	\$	77.69
85240186	09/25/2023	642477	ENERGY PETROLEUM COMPANY	400	400	EACH	\$ 2.85	REGULAR RFG GASONLINE	6486	\$	1,140.16
85240186					1	EACH	\$ 100.65	FEDERAL AND STATE TAXES AND FEES	6486	\$	100.65
85240186					801.2	EACH	\$ 2.85	REGULAR RFG GASONLINE	6486	\$	2,283.74
85240186					1	EACH	\$ 201.60	FEDERAL AND STATE TAXES AND FEES	6486	\$	201.60
85240202	10/17/2023	800559	KIESEL COMPANY	400	300.2	EACH	\$ 2.65	NO LEAD 87 OCT RFG	6486	\$	795.53
85240202					1	EACH	\$ 134.08	FEDERAL AND STATE TAXES AND FEES	6486	\$	134.08
85240202					3963	EACH	\$ 2.65	NO LEAD 87 OCT RFG	6486	\$	10,501.95
85240202					1	EACH	\$ 1,017.33	FEDERAL AND STATE TAXES AND FEES	6486	\$	1,017.33
85240215	10/29/2023	642477	ENERGY PETROLEUM COMPANY	400	348	EACH	\$ 2.38	REGULAR RFG GASONLINE	6486	\$	828.24
85240215					1	EACH	\$ 87.56	FEDERAL AND STATE TAXES AND FEES	6486	\$	87.56
85240215					3309.1	EACH	\$ 2.38	REGULAR RFG GASONLINE	6486	\$	7,875.66
85240215					1	EACH	\$ 847.63	FEDERAL AND STATE TAXES AND FEES	6486	\$	847.63
85240215					270.1	EACH	\$ 2.73	PREMIUM LOW SULFUR CLEAR #2 DIESEL	6486	\$	737.37
85240215					1	EACH	\$ 74.24	FEDERAL AND STATE TAXES AND FEES	6486	\$	74.24
85240221	11/02/2023	636108	BAUMAN OIL DISTRIBUTORS, INC.	400	420.1	EACH	\$ 2.39	REGULAR RFG GASOLINE	6486	\$	1,004.04
85240221					1	EACH	\$ 107.60	FEDERAL AND STATE TAXES AND FEES	6486	\$	107.60
85240221					3984	EACH	\$ 2.39	REGULAR RFG GASOLINE	6486	\$	9,521.76
85240221					1	EACH	\$ 1,020.44	FEDERAL AND STATE TAXES AND FEES	6486	\$	1,020.44
85240221					1	EACH	\$ 35.00	SPLIT LOAD FEE	6486	\$	35.00
85240238	11/22/2023	642477	ENERGY PETROLEUM COMPANY	400	400	EACH	\$ 2.23	REGULAR RFG GASONLINE	6486	\$	892.00
85240238					1	EACH	\$ 100.65	FEDERAL AND STATE TAXES AND FEES	6486	\$	100.65
85240238					4898.7	EACH	\$ 2.23	REGULAR RFG GASONLINE	6486	\$	10,924.10

PO #	Create Date	Vendor	Name	Com	Qty.	UOM	Unit \$	Description	Object	Account	Amt
85240238					1	EACH	\$ 1,254.79	FEDERAL AND STATE TAXES AND FEES	6486	\$	1,254.79
97240023					7500	EACH	\$ 0.00	FED. OIL SPILL FEE	6486	\$	16.05
97240023					7500	EACH	\$ 0.00	MO AGI TAX PER GAL EXTRA	6486	\$	7.50
97240023					7500	EACH	\$ 0.17	MO STATE TAX PER GAL.	6486	\$	1,275.00
97240023					7500	EACH	\$ 0.00	MO. ADG INSP FEE TAX PER GAL	6486	\$	5.25
97240023					7500	EACH	\$ 0.00	MO. USTD TRANSP LOAD FEE TAX PER GAL	6486	\$	18.75
85240266	12/21/2023	636108	BAUMAN OIL DISTRIBUTORS, INC.	400	200.2	EACH	\$ 2.96	PREMIUM LOW SULFUR CLEAR DIESEL	6486	\$	592.59
85240266					1	EACH	\$ 51.40	FEDERAL AND STATE TAXES AND FEES	6486	\$	51.40
85240266					401.2	EACH	\$ 2.00	REGULAR RFG GASOLINE	6486	\$	801.40
85240266					1	EACH	\$ 102.75	FEDERAL AND STATE TAXES AND FEES	6486	\$	102.75
85240266					1	EACH	\$ 35.00	SPLIT LOAD FEE	6486	\$	35.00
85240266					4050	EACH	\$ 2.00	REGULAR RFG GASOLINE	6486	\$	8,089.88
85240266					1	EACH	\$ 1,037.36	FEDERAL AND STATE TAXES AND FEES	6486	\$	1,037.36
85240274	01/07/2024	642477	ENERGY PETROLEUM COMPANY	400	326.3	EACH	\$ 2.20	REGULAR RFG GASOLINE	6486	\$	716.23
85240274					1	EACH	\$ 82.11	FEDERAL AND STATE TAXES AND FEES	6486	\$	82.11
85240274					3982.1	EACH	\$ 2.20	REGULAR RFG GASOLINE	6486	\$	8,740.71
85240274					1	EACH	\$ 1,020.01	FEDERAL AND STATE TAXES AND FEES	6486	\$	1,020.01
85240286	01/24/2024	636108	BAUMAN OIL DISTRIBUTORS, INC.	400	345.6	EACH	\$ 2.06	REGULAR RFG GASOLINE	6486	\$	710.21
85240286					1	EACH	\$ 88.56	FEDERAL AND STATE TAXES AND FEES	6486	\$	88.56
85240286					1	EACH	\$ 35.00	SPLIT LOAD FEE	6486	\$	35.00
85240286					4055	EACH	\$ 2.06	REGULAR RFG GASOLINE	6486	\$	8,333.03
85240286					1	EACH	\$ 1,039.17	FEDERAL AND STATE TAXES AND FEES	6486	\$	1,039.17
85240299	02/05/2024	636108	BAUMAN OIL DISTRIBUTORS, INC.	400	401.3	EACH	\$ 2.25	REGULAR RFG GASOLINE	6486	\$	902.93
85240299					1	EACH	\$ 102.84	FEDERAL AND STATE TAXES AND FEES	6486	\$	102.84
85240299					3057	EACH	\$ 2.25	REGULAR RFG GASOLINE	6486	\$	6,878.25
85240299					1	EACH	\$ 783.41	FEDERAL AND STATE TAXES AND FEES	6486	\$	783.41
85240316	02/22/2024	636108	BAUMAN OIL DISTRIBUTORS, INC.	400	244.3	EACH	\$ 3.13	PREMIUM LOW SULFUR CLEAR DIESEL	6486	\$	764.66
85240316					1	EACH	\$ 62.75	FEDERAL AND STATE TAXES AND FEES	6486	\$	62.75
85240316					438.8	EACH	\$ 2.44	REGULAR RFG GASOLINE	6486	\$	1,069.58
85240316					1	EACH	\$ 112.46	FEDERAL AND STATE TAXES AND FEES	6486	\$	112.46
85240316					1	EACH	\$ 35.00	SPLIT LOAD FEE	6486	\$	35.00
85240316					4048	EACH	\$ 2.40	REGULAR RFG GASOLINE	6486	\$	9,705.08
85240316					1	EACH	\$ 1,037.35	FEDERAL AND STATE TAXES AND FEES	6486	\$	1,037.35
97240029	09/20/2023	800559	KIESEL COMPANY	500	7500	EACH	\$ 3.10	PREMIUM ULSD #2 DIESEL FUEL	6486	\$	23,250.00
97240029					7500	EACH	\$ 0.00	FED OIL SPILL FEE	6486	\$	16.05
97240029					7500	EACH	\$ 0.00	MO. AGI TAX PER GAL EXTRA	6486	\$	7.50
97240029					7500	EACH	\$ 0.17	MO. STATE TAX PER GAL	6486	\$	1,275.00
97240029					7500	EACH	\$ 0.00	MO ADG INSP. FEE TAX PER GAL	6486	\$	5.25
97240029					7500	EACH	\$ 0.00	MO. USTD TRANSP. LOAD FEE TAX PER GA	6486	\$	18.75
97240030	09/28/2023	800559	KIESEL COMPANY	500	7500	EACH	\$ 3.09	PREMIUM ULTRA LOW SULFER DIESEL FUE	6486	\$	23,175.00
97240030					7500	EACH	\$ 0.00	FED OIL SPILL FEE	6486	\$	16.05
97240030					7500	EACH	\$ 0.00	MO AGI TAX PER GAL	6486	\$	7.50
97240030					7500	EACH	\$ 0.17	MO. STATE TAX PER GAL	6486	\$	1,275.00
97240030					7500	EACH	\$ 0.00	MO. ADG INSP. FEE TAX PER GAL	6486	\$	5.25
97240030					7500	EACH	\$ 0.00	MO. USTD TRANSP LOAD FEE TAX PER GAL	6486	\$	18.75
97240029	09/20/2023	800559	KIESEL COMPANY	500	7500	EACH	\$ 3.10	PREMIUM ULSD #2 DIESEL FUEL	6486	\$	23,250.00
97240029					7500	EACH	\$ 0.00	FED OIL SPILL FEE	6486	\$	16.05
97240029					7500	EACH	\$ 0.00	MO. AGI TAX PER GAL EXTRA	6486	\$	7.50
97240029					7500	EACH	\$ 0.17	MO. STATE TAX PER GAL	6486	\$	1,275.00
97240029					7500	EACH	\$ 0.00	MO ADG INSP. FEE TAX PER GAL	6486	\$	5.25
97240029					7500	EACH	\$ 0.00	MO. USTD TRANSP. LOAD FEE TAX PER GA	6486	\$	18.75
97240030	09/28/2023	800559	KIESEL COMPANY	500	7500	EACH	\$ 3.09	PREMIUM ULTRA LOW SULFER DIESEL FUE	6486	\$	23,175.00
97240030					7500	EACH	\$ 0.00	FED OIL SPILL FEE	6486	\$	16.05
97240030					7500	EACH	\$ 0.00	MO AGI TAX PER GAL	6486	\$	7.50
97240030					7500	EACH	\$ 0.17	MO. STATE TAX PER GAL	6486	\$	1,275.00
97240030					7500	EACH	\$ 0.00	MO. ADG INSP. FEE TAX PER GAL	6486	\$	5.25
97240030					7500	EACH	\$ 0.00	MO. USTD TRANSP LOAD FEE TAX PER GAL	6486	\$	18.75
97240032	10/17/2023	636108	BAUMAN OIL DISTRIBUTORS, INC.	500	7500	EACH	\$ 2.59	PREMIUM ULTRA LOW SULFER #2 DIESEL	6486	\$	19,437.75
97240032					7500	EACH	\$ 0.00	FED OIL SPILL FEE	6486	\$	16.05
97240032					7500	EACH	\$ 0.00	MO. AGI TAX PER GAL	6486	\$	7.50
97240032					7500	EACH	\$ 0.17	MO. STATE TAX PER GAL	6486	\$	1,275.00
97240032					7500	EACH	\$ 0.00	MO. ADG INSP FEE TAX PER GAL	6486	\$	5.25
97240032					7500	EACH	\$ 0.00	MO. USTD TRANSP LOAD FEE TAX PER GAL	6486	\$	18.75
97240034	11/08/2023	800559	KIESEL COMPANY	500	7500	EACH	\$ 3.15	PREMIUM ULTRA LOW SULFER DIESEL FUE	6486	\$	23,625.00
97240034					7500	EACH	\$ 0.00	FED OIL SPILL FEE	6486	\$	16.05
97240034					7500	EACH	\$ 0.00	MO. AGI TAX PER GAL	6486	\$	7.50
97240034					7500	EACH	\$ 0.17	MO. STATE TAX PER GAL	6486	\$	1,275.00

PO #	Create Date	Vendor	Name	Com	Qty.	UOM	Unit \$	Description	Object	Account Amt
97240034					7500	EACH	\$ 0.00	MO. ADG INSP FEE TAX PER GAL	6486	\$ 5.25
97240034					7500	EACH	\$ 0.00	MO. USTD TRANSP LOAD FEE TAX PER GAL	6486	\$ 18.75
97240034	11/30/2023	636108	BAUMAN OIL DISTRIBUTORS, INC.	500	7500	EACH	\$ 2.65	PREMIUM #2 ULTRA LOW SULFER DIESEL F	6486	\$ 19,856.25
97240034					7500	EACH	\$ 0.00	FED OIL SPILL FEE	6486	\$ 16.05
97240034					7500	EACH	\$ 0.00	MO. AGI TAX PER GAL	6486	\$ 7.50
97240034					7500	EACH	\$ 0.17	MO. STATE TAX PER GAL	6486	\$ 1,275.00
97240034					7500	EACH	\$ 0.00	MO. ADG INSP. FEE TAX PER GAL.	6486	\$ 5.25
97240034					7500	EACH	\$ 0.00	MO. USTD TRANSP. LOAD FEE TAX PER GA	6486	\$ 18.75
97240052	12/11/2023	800559	KIESEL COMPANY	500	7500	EACH	\$ 2.48	PREMIUM #2 ULTRA LOW SULFER DIESEL F	6486	\$ 18,562.50
97240052					7500	EACH	\$ 0.00	FED. OIL SPILL FEE	6486	\$ 16.05
97240052					7500	EACH	\$ 0.00	MO. AGI TAX PER GAL EXTRA	6486	\$ 7.50
97240052					7500	EACH	\$ 0.17	MO. STATE TAX PER GAL	6486	\$ 1,275.00
97240052					7500	EACH	\$ 0.00	MO. ADG INSP. FEE TAX PER GAL	6486	\$ 5.25
97240052					7500	EACH	\$ 0.00	MO. USTD TRANSP LOAD FEE TAX PER GAL	6486	\$ 18.75
97240059	01/11/2024	636108	BAUMAN OIL DISTRIBUTORS, INC.	500	7500	EACH	\$ 2.37	PREMIUM ULTRA LOW SULFER DIESEL FUE	6486	\$ 17,801.25
97240059					7500	EACH	\$ 0.00	FED OIL SPILL FEE	6486	\$ 16.05
97240059					7500	EACH	\$ 0.00	MO AGI TAX PER GAL	6486	\$ 7.50
97240059					7500	EACH	\$ 0.17	MO STATE TAX PER GAL	6486	\$ 1,275.00
97240059					7500	EACH	\$ 0.00	MO ADG INSP FEE TAX PER GAL	6486	\$ 5.25
97240059					7500	EACH	\$ 0.00	MO USTD TRANSP LOAD FEE TAX PER GAL	6486	\$ 18.75
97240060	02/06/2024	636108	BAUMAN OIL DISTRIBUTORS, INC.	500	7500	EACH	\$ 2.35	PREMIUM ULTRA LOW SULFER DIESEL FUE	6486	\$ 17,606.25
97240060					7500	EACH	\$ 0.00	FED OIL SPILL FEE	6486	\$ 16.05
97240060					7500	EACH	\$ 0.00	MO. AGI TAX PER GAL EXTRA	6486	\$ 7.50
97240060					7500	EACH	\$ 0.17	MO STATE TAX PER GAL	6486	\$ 1,275.00
97240060					7500	EACH	\$ 0.00	MO. ADG. INSP. FEE TAX PER GAL	6486	\$ 5.25
97240060					7500	EACH	\$ 0.00	MO. USTD TRANSP. LOAD FEE TAX PER GA	6486	\$ 18.75
97240063	02/20/2024	642477	ENERGY PETROLEUM COMPANY	500	7500	EACH	\$ 2.80	PREMIUM ULTRA LOW SULFER DIESEL FUE	6486	\$ 21,000.00
97240063					7500	EACH	\$ 0.00	FED. OIL SPILL FEE	6486	\$ 16.05
97240063					7500	EACH	\$ 0.00	MO. AGI TAX PER GAL. EXTRA	6486	\$ 7.50
97240063					7500	EACH	\$ 0.17	MO. STATE TAX PER GAL.	6486	\$ 1,275.00
97240063					7500	EACH	\$ 0.00	MO. ADG INSP. FEE TAX PER GAL.	6486	\$ 5.25
97240063					7500	EACH	\$ 0.00	MO. USTD TRANSP. LOAD FEE TAX PER GA	6486	\$ 18.75
Total Commodity 202 (Paper)									\$	149,538.90
Total Commodity 400 (Fuel - Facilities)									\$	160,285.23
Total Commodity 500 (Fuel - Transportation)									\$	245,287.05
Total Commodity 401 (Trash Liners)									\$	-
Grand Total All Commodity									\$	555,111.18