



## The Northstar, Ross Elementary    National School of Character

Happy Spring to all! It is hard to believe that April is already upon us. There are many opportunities in April to celebrate our students and to come together as a community. We hope to see many of our families at the District Art Show on April 22<sup>nd</sup> and 23<sup>rd</sup> as well as the Cardinal Game on April 25<sup>th</sup> to hear our choir perform. One of my favorite traditions at Ross is the Donut Dash (formally referred to as the Fun Run). The Donut Dash is an opportunity to walk and or run for a great cause. Be sure to look for sign up information very soon.

As many of you know, Ross is getting a new and improved parking lot that was part of the recent bond issue. I have shared the plans and the blue prints at PTO Meetings and Principal Coffees. I've included a copy of the blue prints so all families can have a sneak peek! We are very excited about the improvements because the lot will offer a separate carpool lane and a longer bus lane to help keep buses off Ross Rd. The new lot will also add 19 additional parking spots to support the front of the building as well as new landscaping to beautify the school. The work for the parking lot will begin in early May with the completion occurring before we begin the 2017-2018 school year.

### UPCOMING DATES

- 4/01 PTO Trivia Night
- 4/03 Choir 8am
- 4/04 5<sup>th</sup> Grade NEMS 9:15-10:30 am
- 4/05 Late Start Day School Begins @11:05am  
Ross Coloring Club 4:10-4:45 pm
- 4/06 Running Club 8am  
Kindergarten Piggy Opera 6:30pm  
PTO Dairy Queen Night 4:00-8:00 pm
- 4/07 5<sup>th</sup> Grade Planetarium 9-2pm
- 4/10 Choir 8am  
Principal's Coffee 9-10 am
- 4/12 Ross Coloring Club 4:10-4:45 pm  
Parkway Board Meeting
- 4/13 Running Club 8am  
Spelling Bee Prelims 9:15am  
Ross Coloring Club 4:10-4:45 pm (last one)
- 4/14 **NO SCHOOL**-Good Friday
- 4/17 Choir 8am  
Project Parkway (North High)
- 4/18 2<sup>nd</sup> Grade Butterfly House 9:15-11:30 am
- 4/20 Running Club 8am
- 4/21 4<sup>th</sup> Grade Hannibal 7:30-3:30 pm  
Skate Night 5:45 pm
- 4/22 All District Art Show 10-4pm
- 4/23 All District Art Show 12-4pm
- 4/24 Choir 8am
- 4/25 Ross Night@ The Ball Park 7:15pm
- 4/26 Secretary Appreciation Day
- 4/27 Running Club 8am
- 4/28 5<sup>th</sup> Grade JBiz Town
- 4/29 Ross Donut Dash 9:00 am

MAP Testing for grades 3 through 5 will occur  
from April 18<sup>th</sup> through April 27<sup>th</sup>

# FIRST IMPACT

*preparing new drivers for the road ahead*



**PARKWAY**  
SPEAKER SERIES



## PLEASE JOIN US

Central Middle School  
371 N. Woods Mill Road  
Chesterfield, MO 63017

Wednesday, April 19, 2017

6:30 PM - 8:00 PM

**First Impact** is a 60-minute evidence-based traffic safety program that educates parents about Missouri's Graduated Driver License (GDL) law. The goal for First Impact is to reduce new driver crashes and the resulting injuries and fatalities by increasing parents' awareness and enforcement of Missouri's GLD law.

**Objectives of the program are to increase:**

- Awareness of teen driving risks
- Understanding of Missouri's GLD law
- GDL monitoring and enforcement at home
- Importance of being a positive role model

The program is delivered by trained facilitators who coach parents by presenting key facts and proven strategies to help parents lower their teens' crash risk by utilizing the Missouri GLD law.

**FREE** childcare will be provided by Parkway A+ students

# Starting the Conversation

Raising Emotionally and Mentally Healthy Kids  
A Program for Parents and Caregivers



**Please Join us!**  
Monday, May 8, 2017  
Parkway Central Middle  
371 N. Woods Mill Road  
Chesterfield, MO 63017  
6:30 PM - 8:00 PM



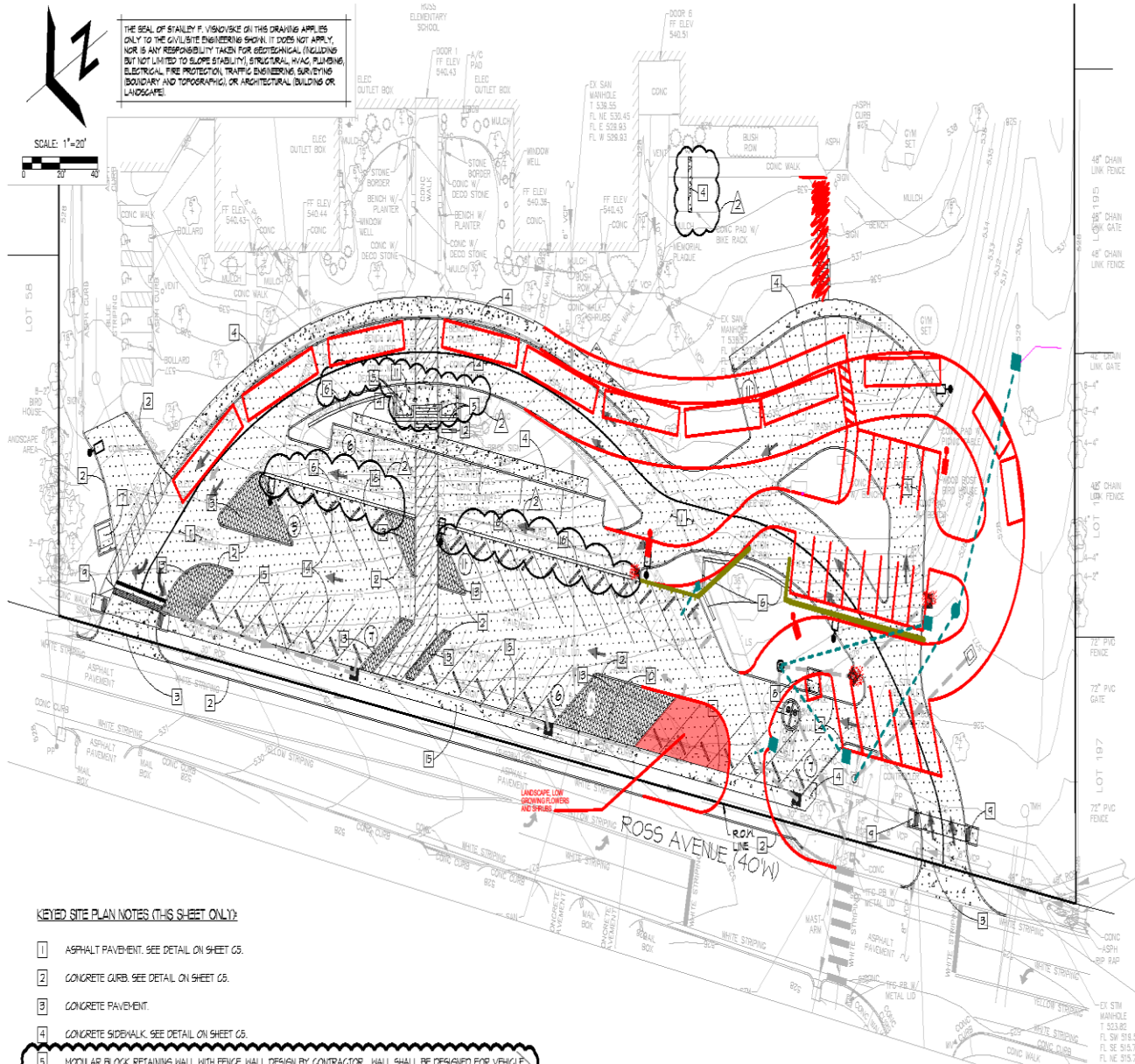
## What to Expect

- Hear stories from parents and caregivers with real-life experiences
- Help your child talk about changing emotions and challenging circumstances
- Make emotional health part of your everyday conversations with your child
- Learn about free local resources that are easily available

**FREE** childcare will be provided by Parkway A+ students







**KEYED SITE PLAN NOTES (THIS SHEET ONLY):**

- 1 ASPHALT PAVEMENT. SEE DETAIL ON SHEET C5.
- 2 CONCRETE CURB. SEE DETAIL ON SHEET C5.
- 3 CONCRETE PAVEMENT.
- 4 CONCRETE SIDEWALK. SEE DETAIL ON SHEET C5.
- 5 MODULAR BLOCK RETAINING WALL WITH FENCE. WALL DESIGN BY CONTRACTOR. WALL SHALL BE DESIGNED FOR VEHICLE SURCHARGE WHERE APPLICABLE. SEE DETAIL ON SHEET C5.
- 6 MODULAR BLOCK RETAINING WALL WITHOUT FENCE. WALL DESIGN BY CONTRACTOR. WALL SHALL BE DESIGNED FOR VEHICLE SURCHARGE WHERE APPLICABLE. SEE DETAIL ON SHEET C5.
- 7 RELOCATE PUBLIC RECYCLING CONTAINER. SEE CONCRETE PAD DETAIL ON SHEET C5. SEE DIMENSIONS ON SHEET C21.
- 8 RELOCATE PUBLIC CLOTHING DONATION DROP BOX ON 13'X15' PAD. SEE CONCRETE PAD DETAIL ON SHEET C5.
- 9 ADA ACCESSIBLE RAMP. SEE DETAIL ON SHEET C5.
- 10 NEW LOCATION FOR EXISTING SCHOOL MARQUEE SIGN.
- 11 FOR LOCATION OF PLACEMENT OF EXISTING FLAGPOLE, SEE LANDSCAPE PLAN.
- 12 NEW LOCATION FOR EXISTING SCHOOL SIGN. SEE LANDSCAPE PLANS FOR DETAILS.
- 13 NEW PRE-CAST PAVES. SEE DETAIL ON SHEET C5.
- 14 WHEEL STOPS. SEE DETAIL ON SHEET C6.
- 15 INTEGRAL SIDEWALK/CURB. SEE DETAIL ON SHEET C6.
- 16 GUARD RAIL + GUARD RAIL POSTS (TYPICAL OF 21 POSTS). SEE DETAIL ON SHEET C10.

**ARCHITECT**  
 MECHANICAL ENGINEER  
 PLUMBING / FP ENGINEER  
 ELECTRICAL ENGINEER  
 STRUCTURAL ENGINEER  
 CIVIL ENGINEER  
 LANDSCAPE ARCHITECT

**TELL ARCHITECTS**  
 WILLIAM TAO & ASSOCIATES, INC.  
 WILLIAM TAO & ASSOCIATES, INC.  
 RFP CONSULTING ENGINEERS  
 EDC - ENGINEERING DESIGN SOURCE  
 PDS - PLANNING DESIGN STUDIO

1150 Ross Avenue  
 St. Louis, Missouri 63146

**PARKWAY SCHOOLS**

**ROSS ELEMENTARY SCHOOL**  
 BUILDING RENOVATIONS AND  
 SITE IMPROVEMENTS  
 PARKWAY SCHOOL DISTRICT  
 Parkway School District Project No. 061601B

**REVISONS**

NO.	DATE	DESCRIPTION
1	12.01.16	ADDENDUM 2

**DWG. BY**  
 PDS PROJECT NO. 061601B  
 PROJECT NO. 14-006-16  
 SHEET NO. C2